

Understanding Inequality in America and the World

James K. Galbraith

UT Forum

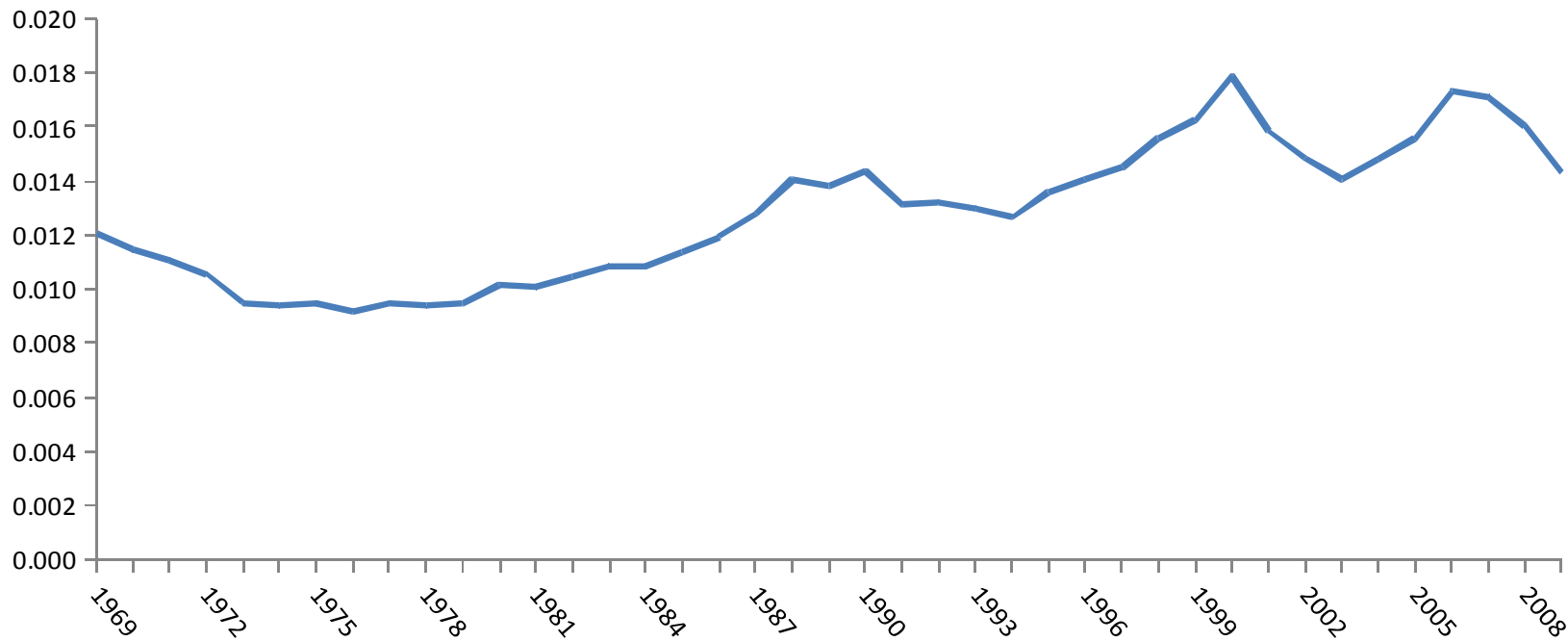
November 6, 2015

A Credo

“Kepler undertook to draw a curve through the places of Mars, and his greatest service to science was in impressing on men's minds that this was the thing to be done if they wished to improve astronomy; that they were not to content themselves with inquiring whether one system of epicycles was better than another, but that they were to sit down to the figures and find out what the curve, in truth was.”

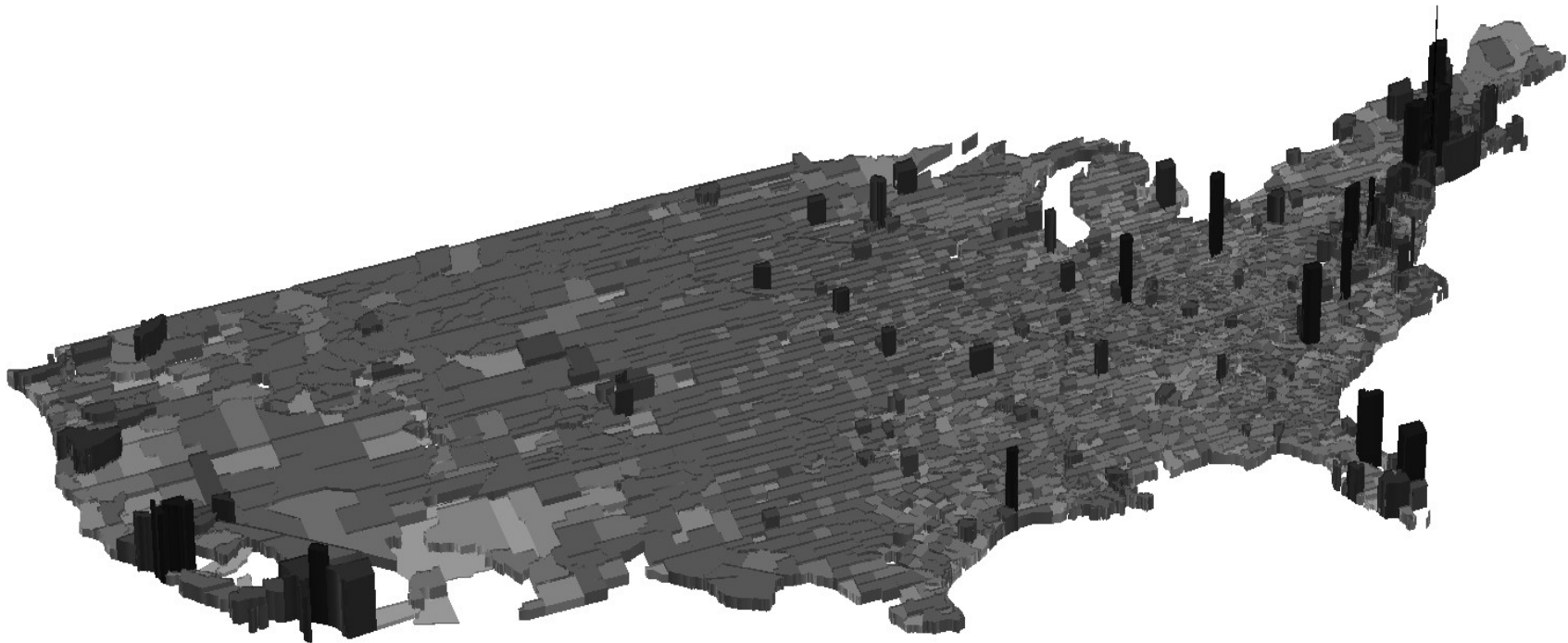
-- Charles Sanders Peirce (1877)

Income Inequality in the United States, 1969-2009 Measured Between Counties: An Update



Calculation by Amin Shams

Contribution of Each County to Income Inequality, Late 2000s



Contribution to inequality is presented as shading and as height above or below the zero plane.

Estimated Household Income Inequality

Levels and Changes in the World
1963-2008

By Decade Averages

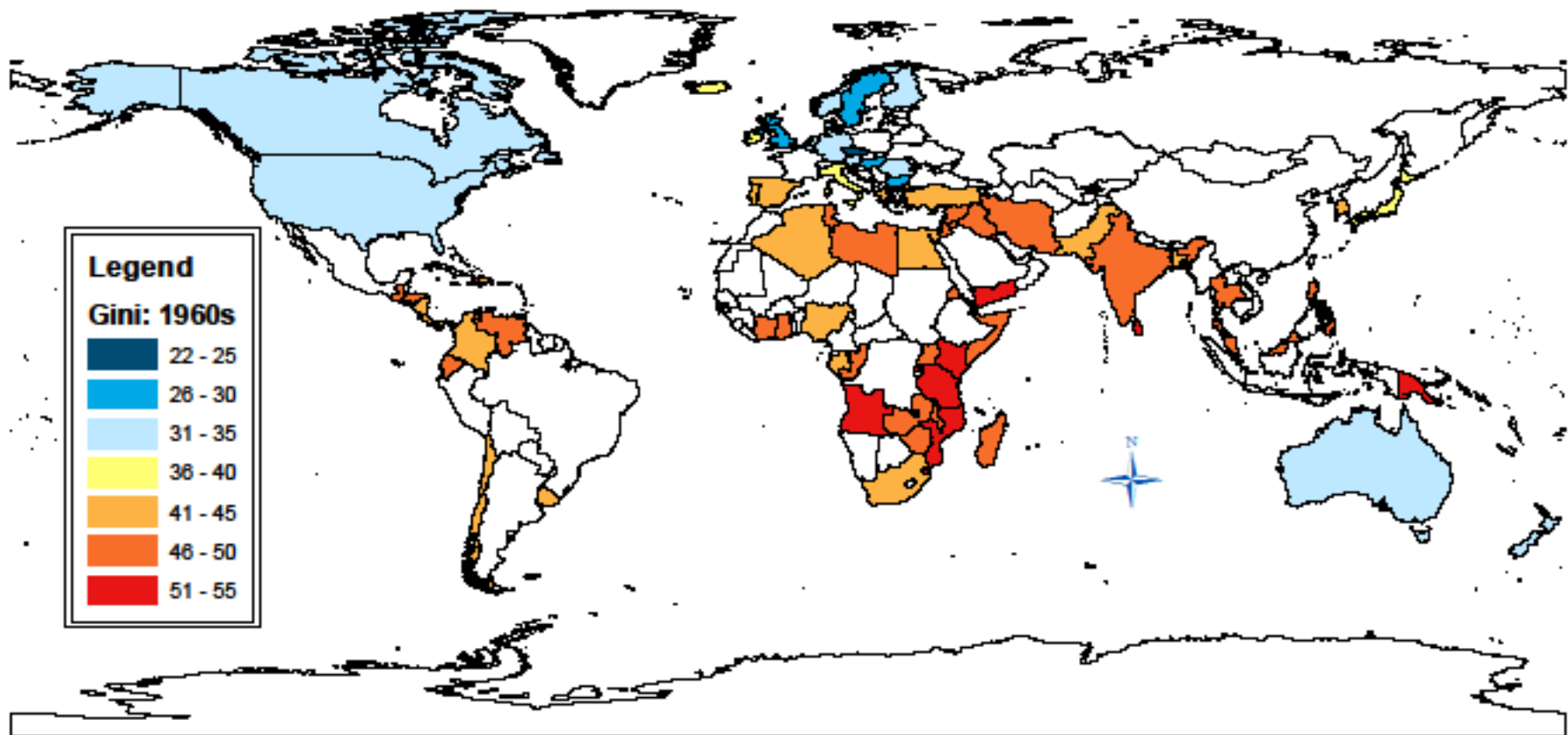
With 3872 observations for 149 countries, we believe EHII is the largest single-concept income inequality data set not using any interpolation across years or countries.

A Brief Summary

The EHII data set is a panel of *estimated* Gini coefficients for gross household income, derived from *measures* of cross-sector industrial pay inequality and other information, especially the share of manufacturing in total output. It is calibrated to standard Gini coefficients by a simple regression analysis.

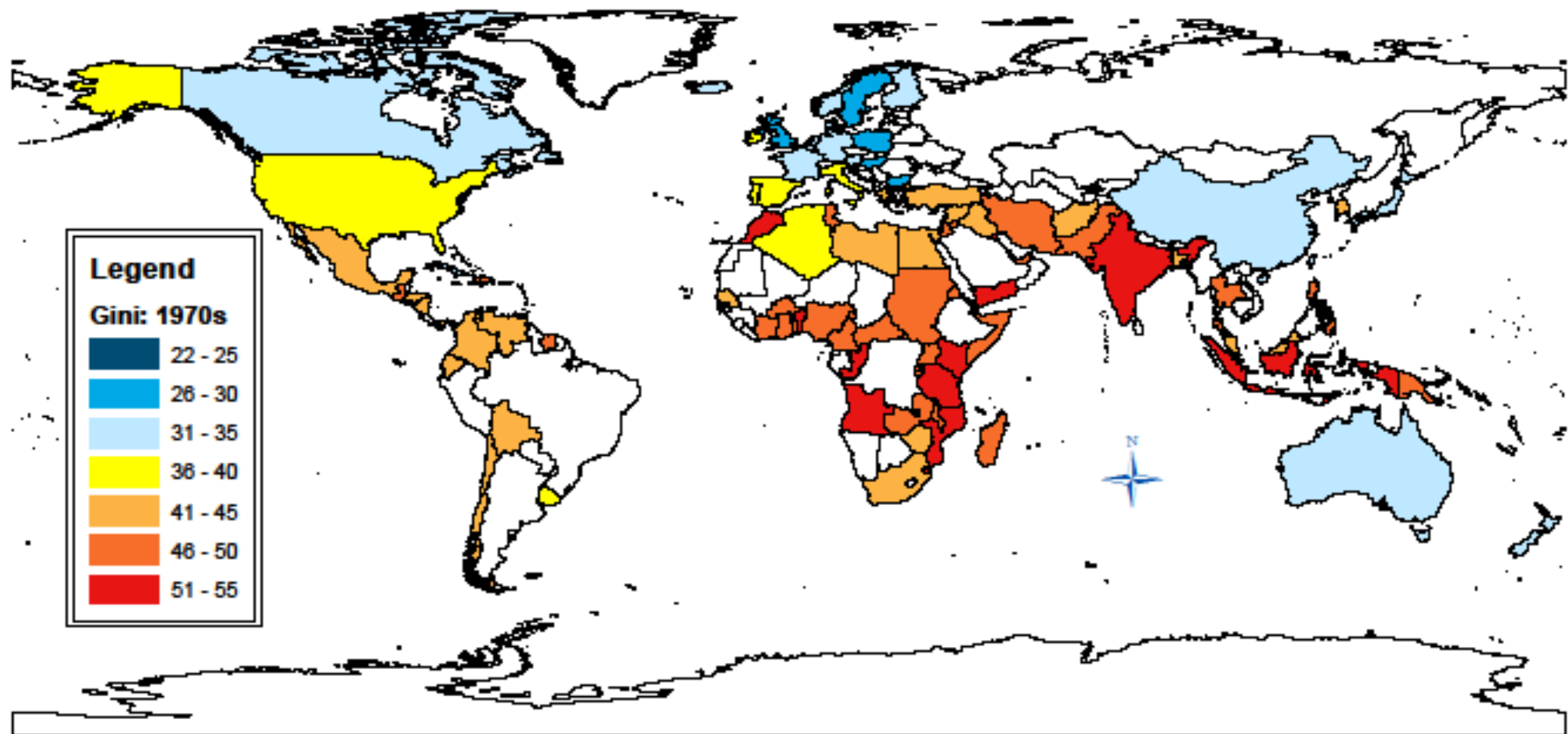
EHI Inequality Data: Gini

1960s

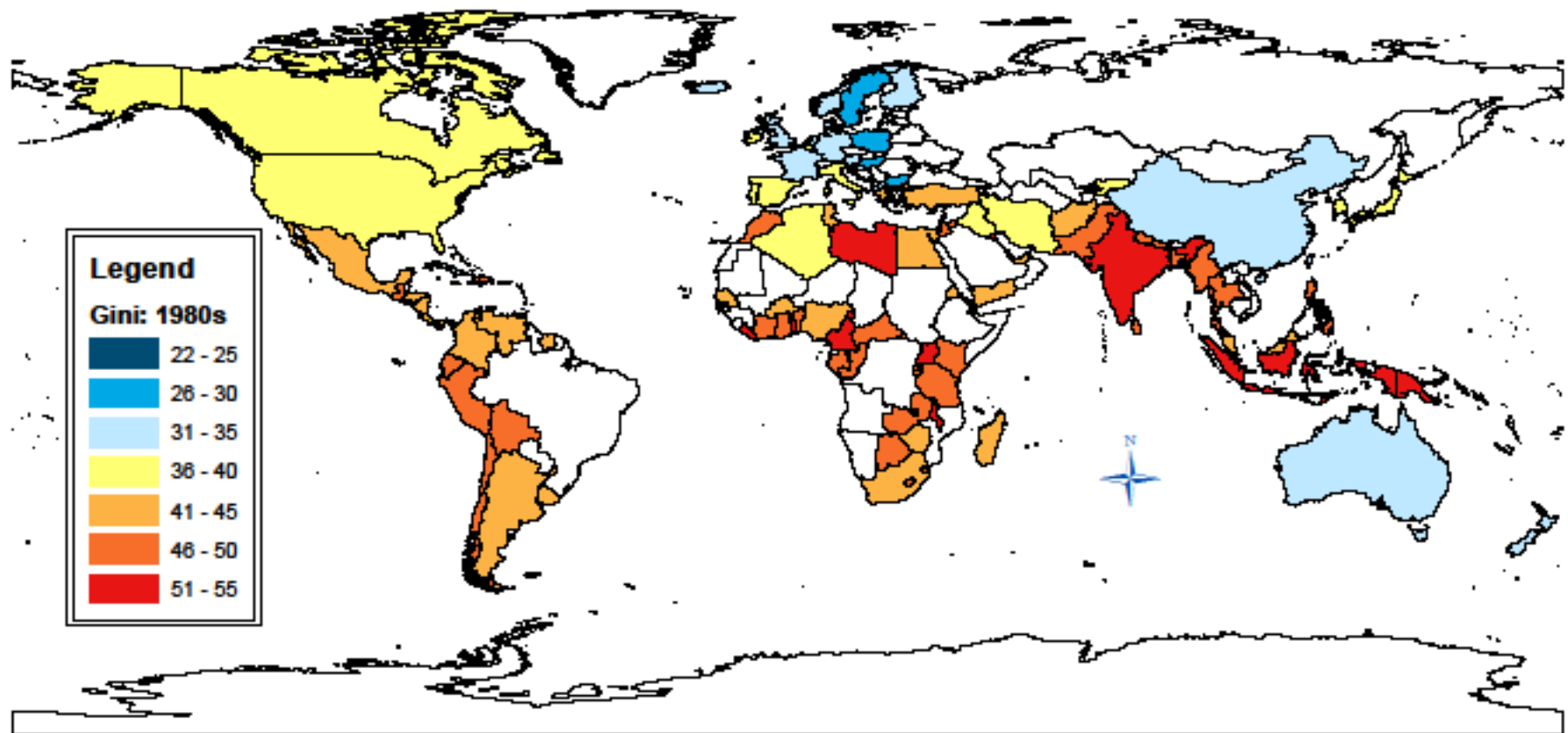


EHI Inequality Data: Gini

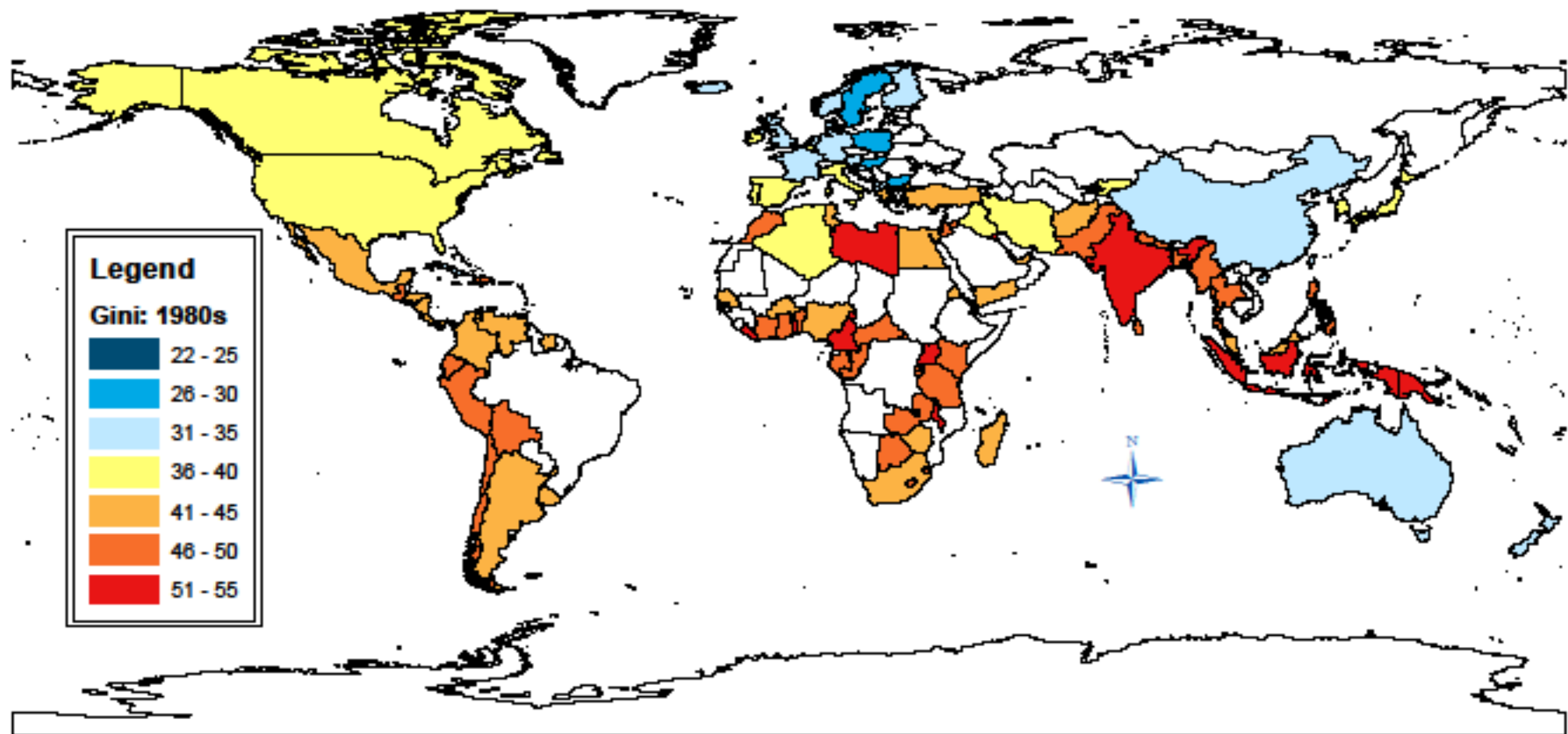
1970s



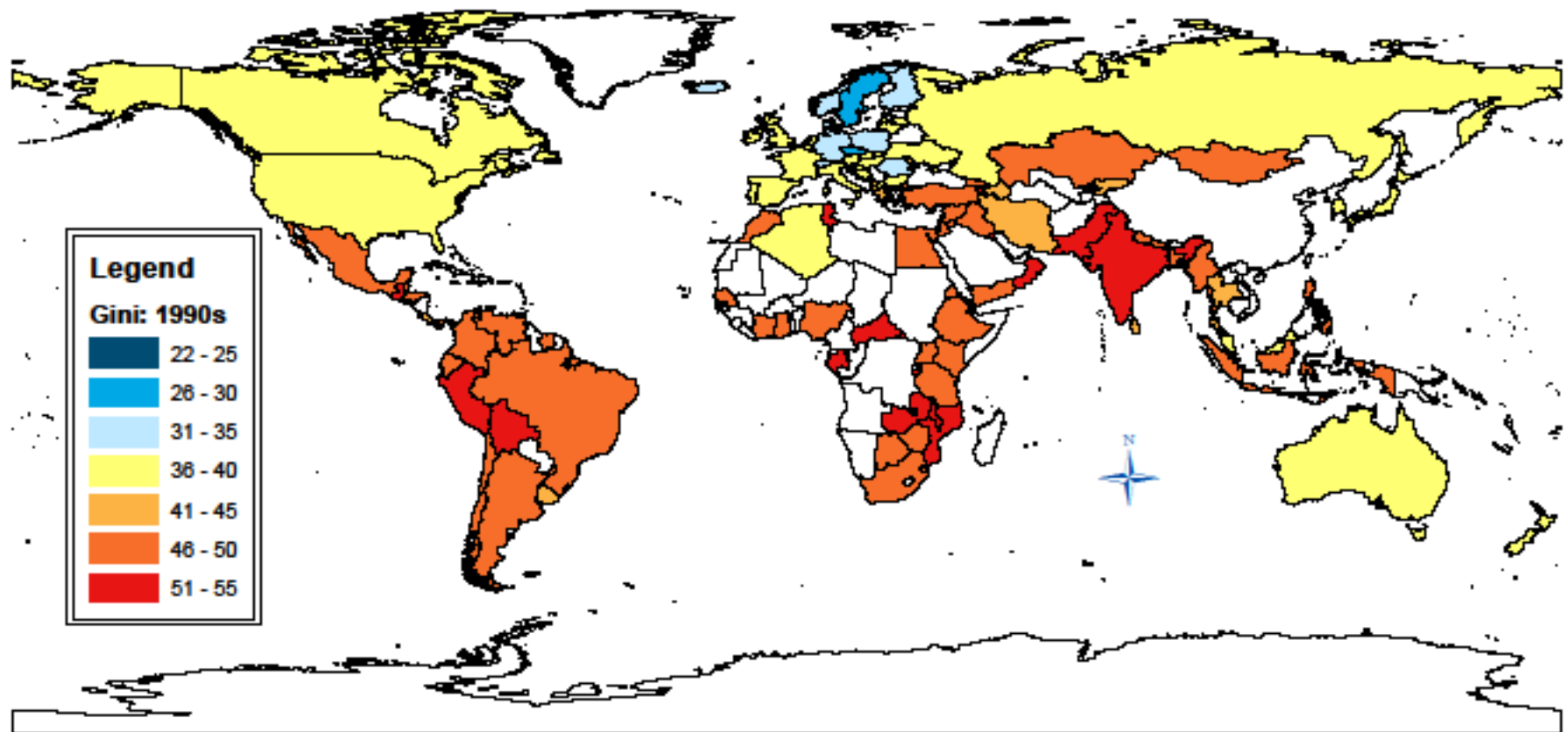
EHI Inequality Data: Gini 1980s



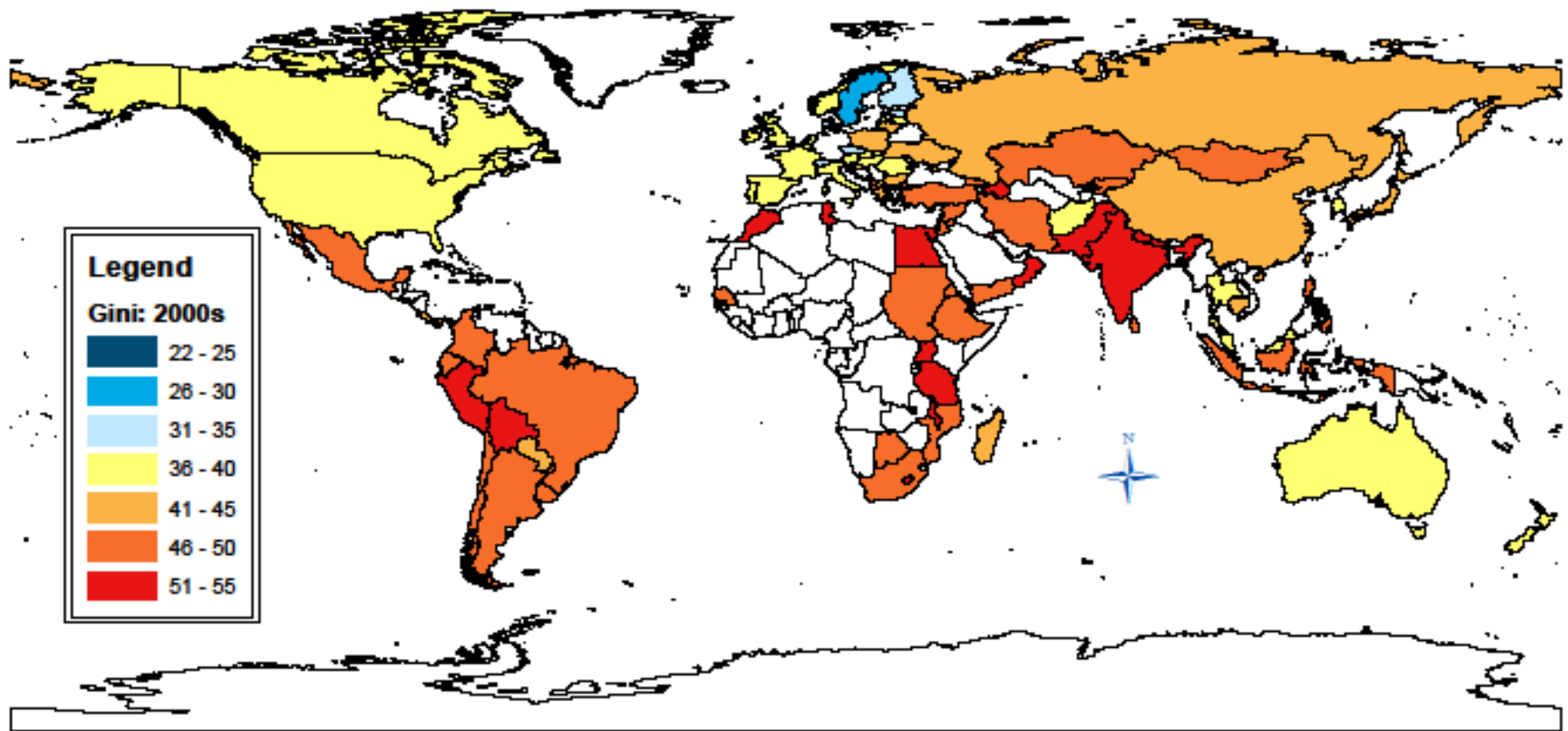
EHI Inequality Data: Gini 1980s



EHI Inequality Data: Gini 1990s



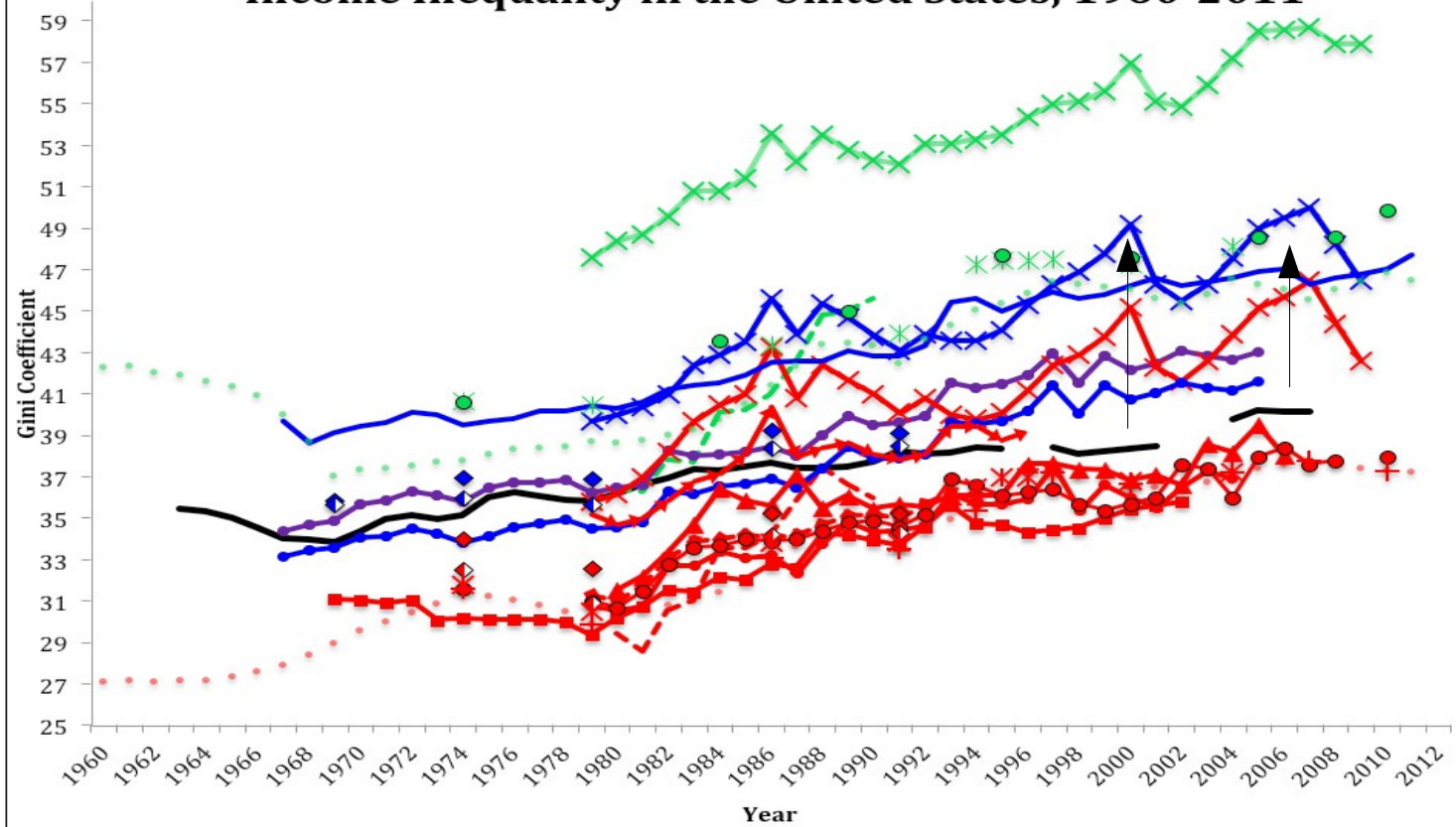
EHI Inequality Data: Gini 2000s



Why?

Because the data on inequality are a mess.

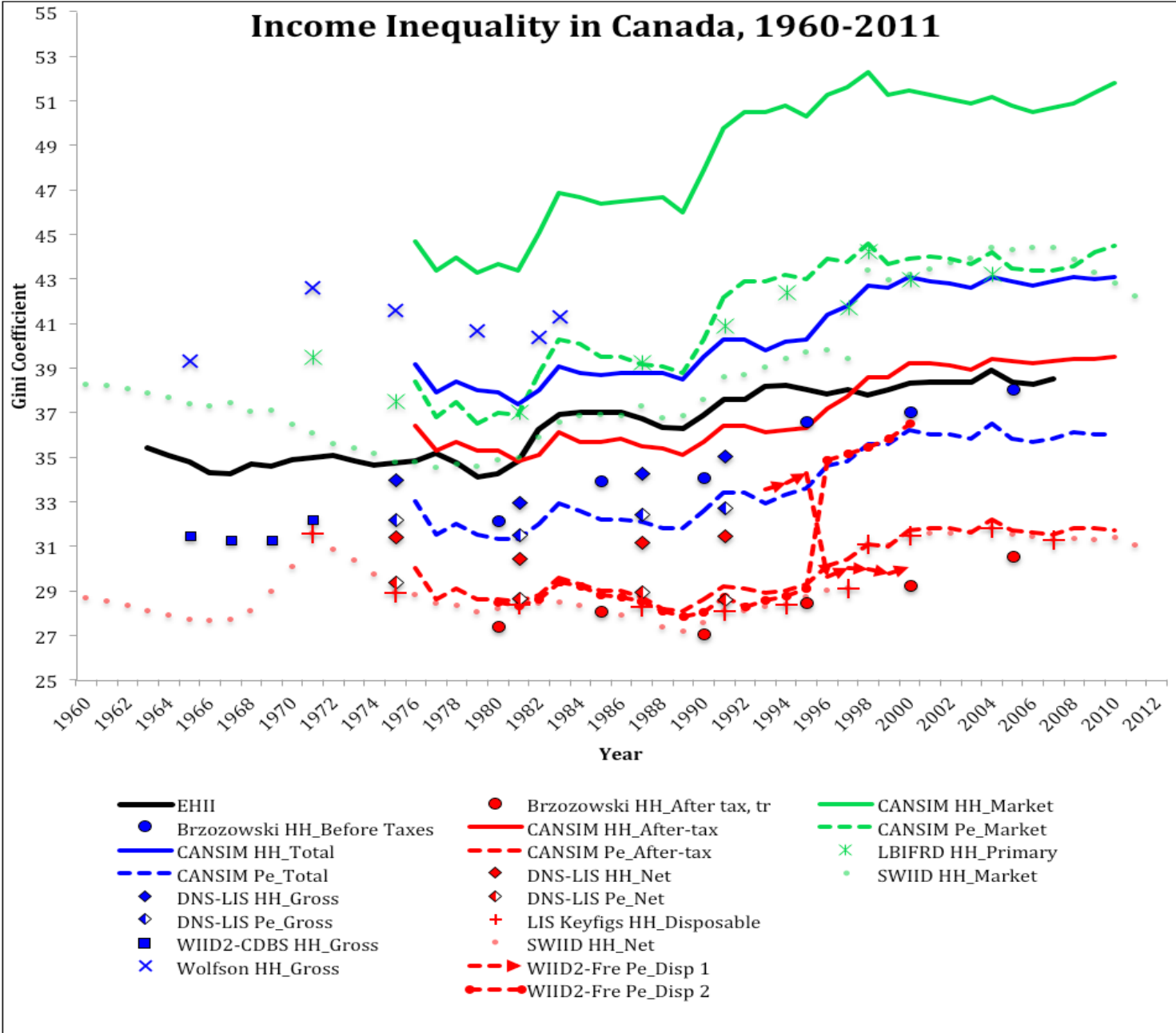
Income Inequality in the United States, 1960-2011



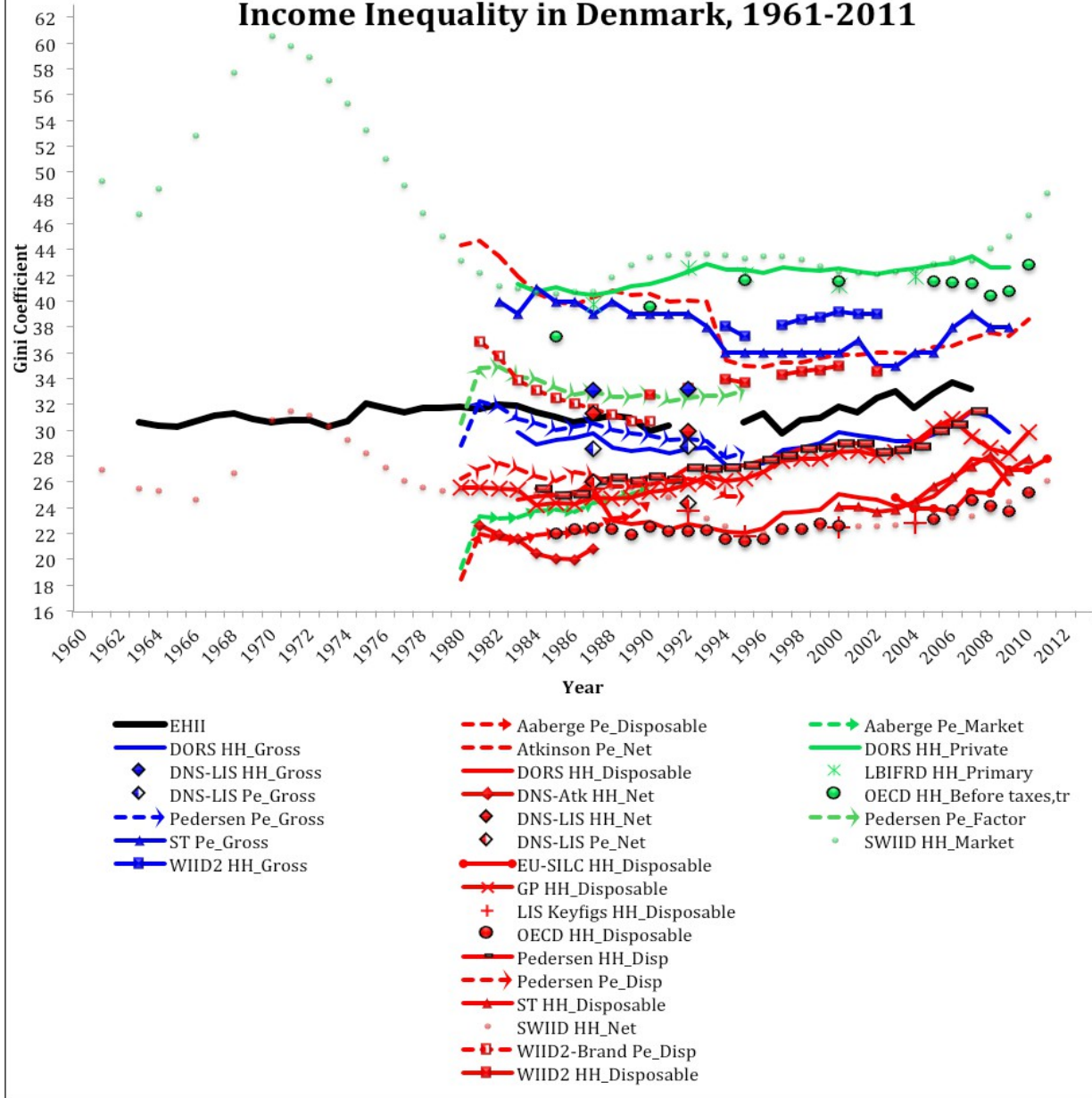
- | | | | |
|------------------------|---------------------------|-----------------------------|--------------------------|
| — EHII | - - - Aaerge Pe_Dis | - - - Aaerge Pe_Market | —●— Heathcote HH_Pre-gov |
| —x— CBO HH_Before-tax | -x- CBO HH_After-tax | -x- CBO HH_Market | |
| —◇— DNS-LIS HH_Gross | -◇- DNS-LIS HH_Net | -x- LBIFRD HH_Primary | |
| —◇— DNS-LIS Pe_Gross | -◇- DNS-LIS Pe_Net | ●— OECD HH_Before taxes, tr | |
| —●— Heathcote HH_Gross | -◇- Gottschalk Pe_Dis | ●— SWIID HH_Market | |
| —●— USCIB HH_Gross | -▲- Heathcote-CEX HH_Dis | | |
| | —●— Heathcote-CPS HH_Dis | | |
| | —■— Heathcote-PSID HH_Dis | | |
| | -x- LBIFRD HH_Dis | | |
| | + LIS Keyfigs HH_Dis | | |
| | —●— OECD HH_Dis | | |
| | ● SWIID HH_Net | | |
| | —■— WIID2 HH_Dis | | |

Wealthy Countries

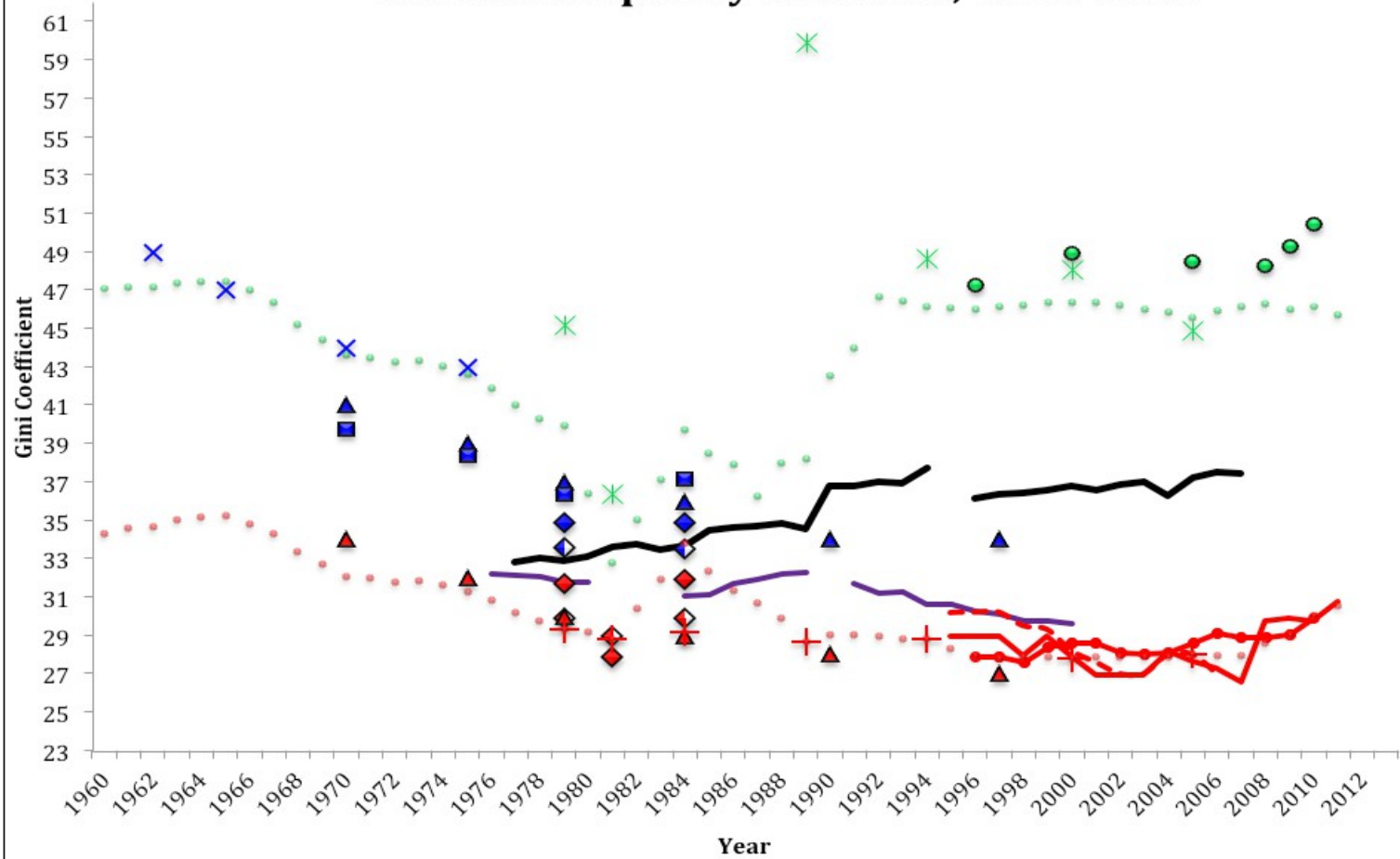
Income Inequality in Canada, 1960-2011



Income Inequality in Denmark, 1961-2011

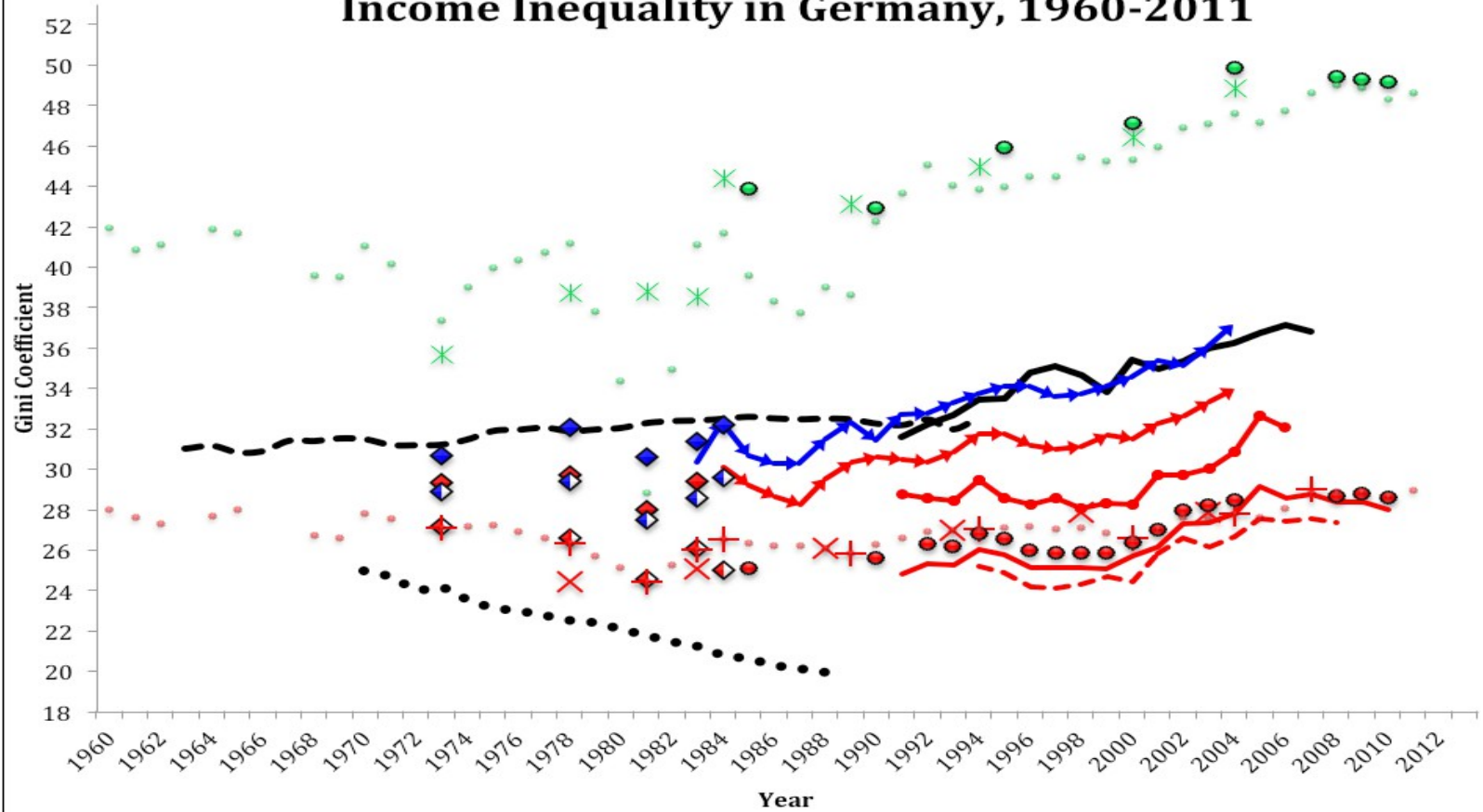


Income Inequality in France, 1960-2011



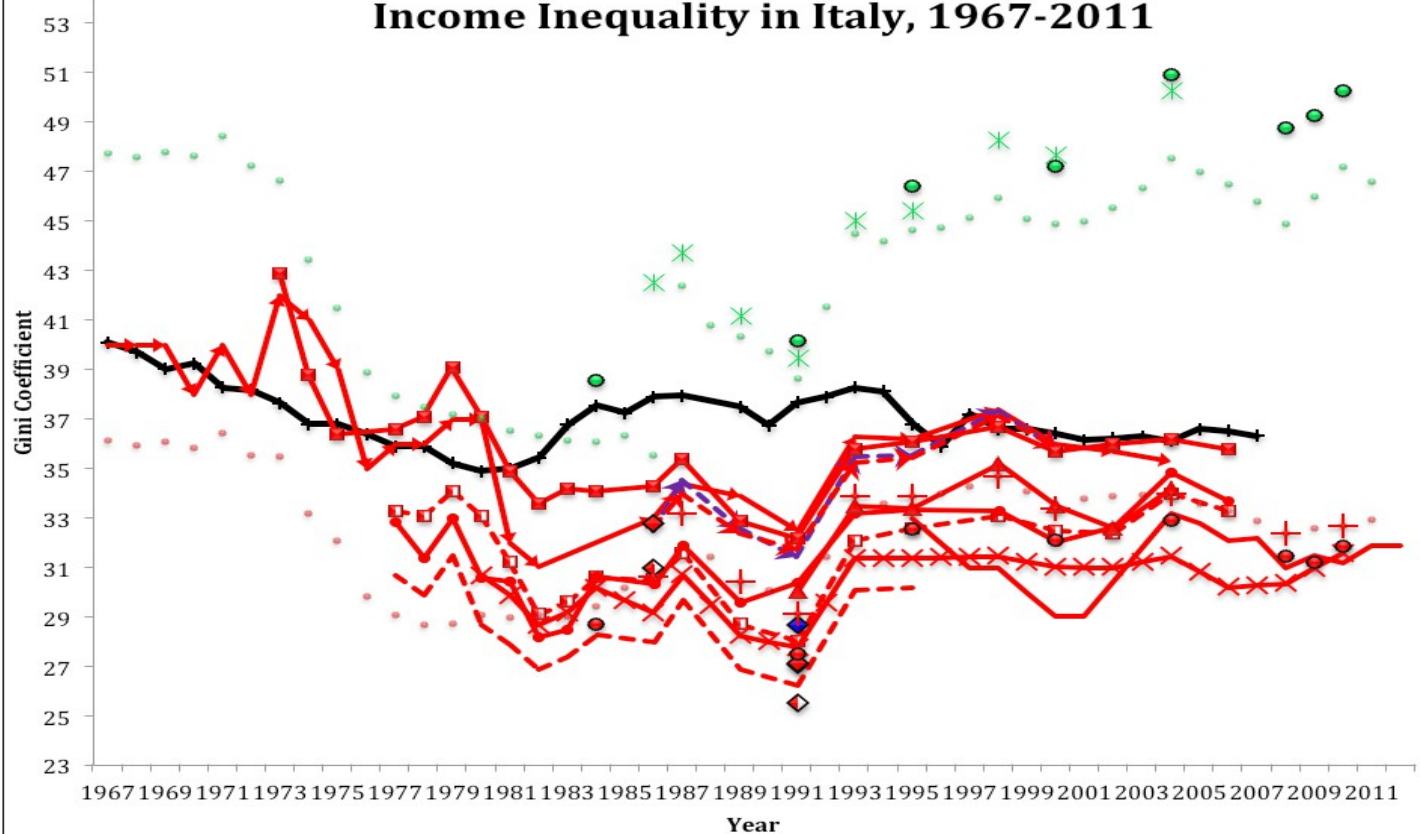
- EHHI
- ◆ DNS-LIS HH_Gross
- ◆ DNS-LIS Pe_Gross
- × DNS-UN HH_Gross
- ▲ Hourriez HH_Declared
- WIID2 HH_Taxable
- Burricand HH_Dispatch
- ◆ DNS-LIS HH_Net
- ◆ DNS-LIS Pe_Net
- EU_SILC HH_Dispatch
- ▲ Hourriez HH_Dispatch
- + LIS Keyfigs HH_Dispatch
- SWIID HH_Net
- WIID2-EU Pe_Dispatch
- × LBIFRD HH_Primary
- OECD HH_Before taxes, tr
- SWIID HH_Market
- Koubi_Ea

Income Inequality in Germany, 1960-2011



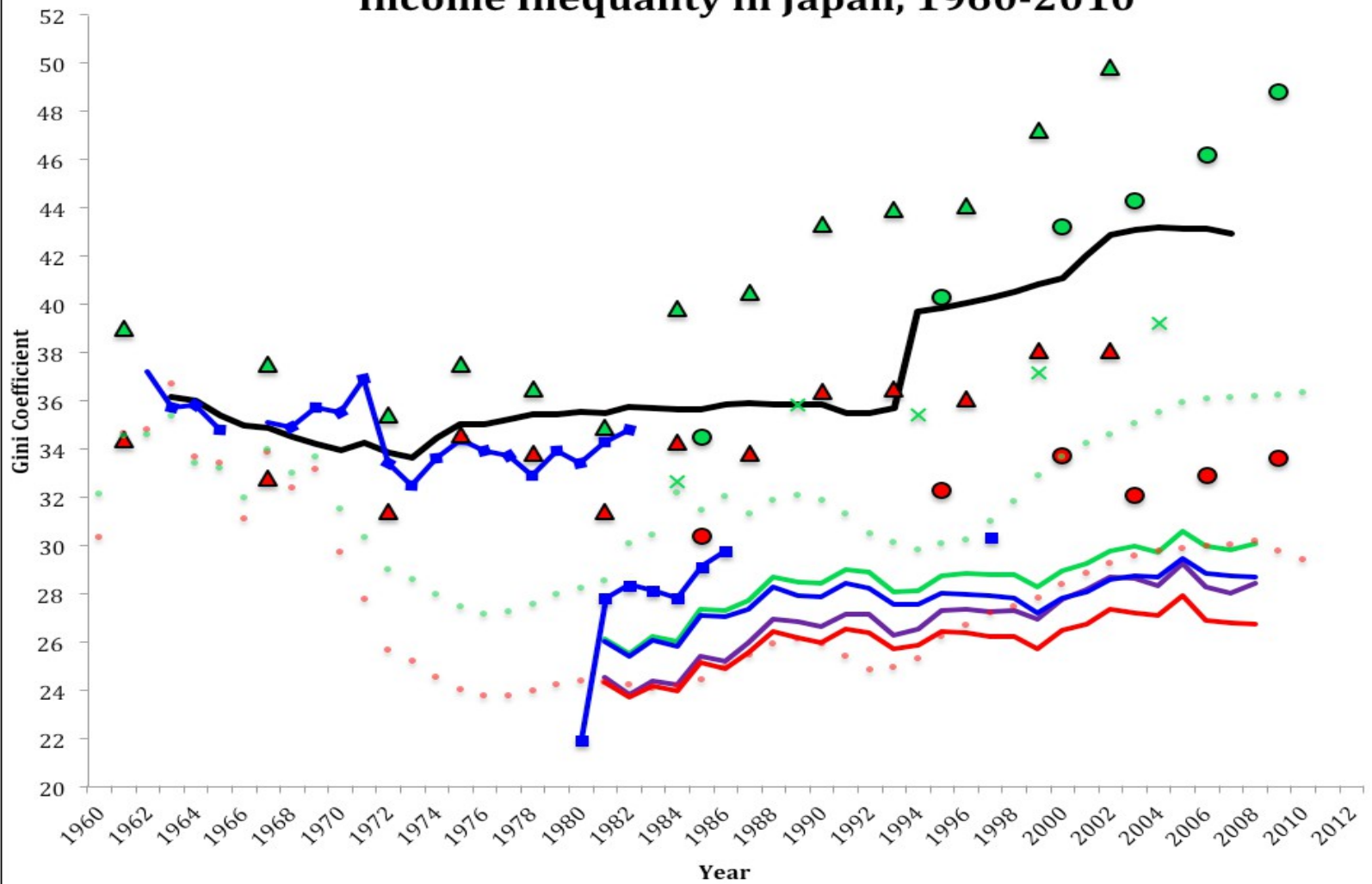
- EHII-Ger
- EHII-Ger, DDR
- - - EHII-Ger, DEU
- ◆ DNS-LIS HH_Gross
- ◆ DNS-LIS Pe_Gross
- Krueger-GSOEP_HH Pre-Gov
- Becker HH_Net
- - - Biewen-Juhasz Pe_Net
- ◆ DNS-LIS HH_Net
- ◆ DNS-LIS Pe_Net
- Grabka HH_Post-Gov
- × Krueger-EVS HH_Disposable
- Krueger-GSOEP HH_Disposable
- + LIS Keyfigs HH_Disposable
- OECD HH_Disposable
- SWIID HH_Net
- * LBIFRD HH_Primary
- OECD HH_Before taxes,tr
- SWIID HH_Market

Income Inequality in Italy, 1967-2011



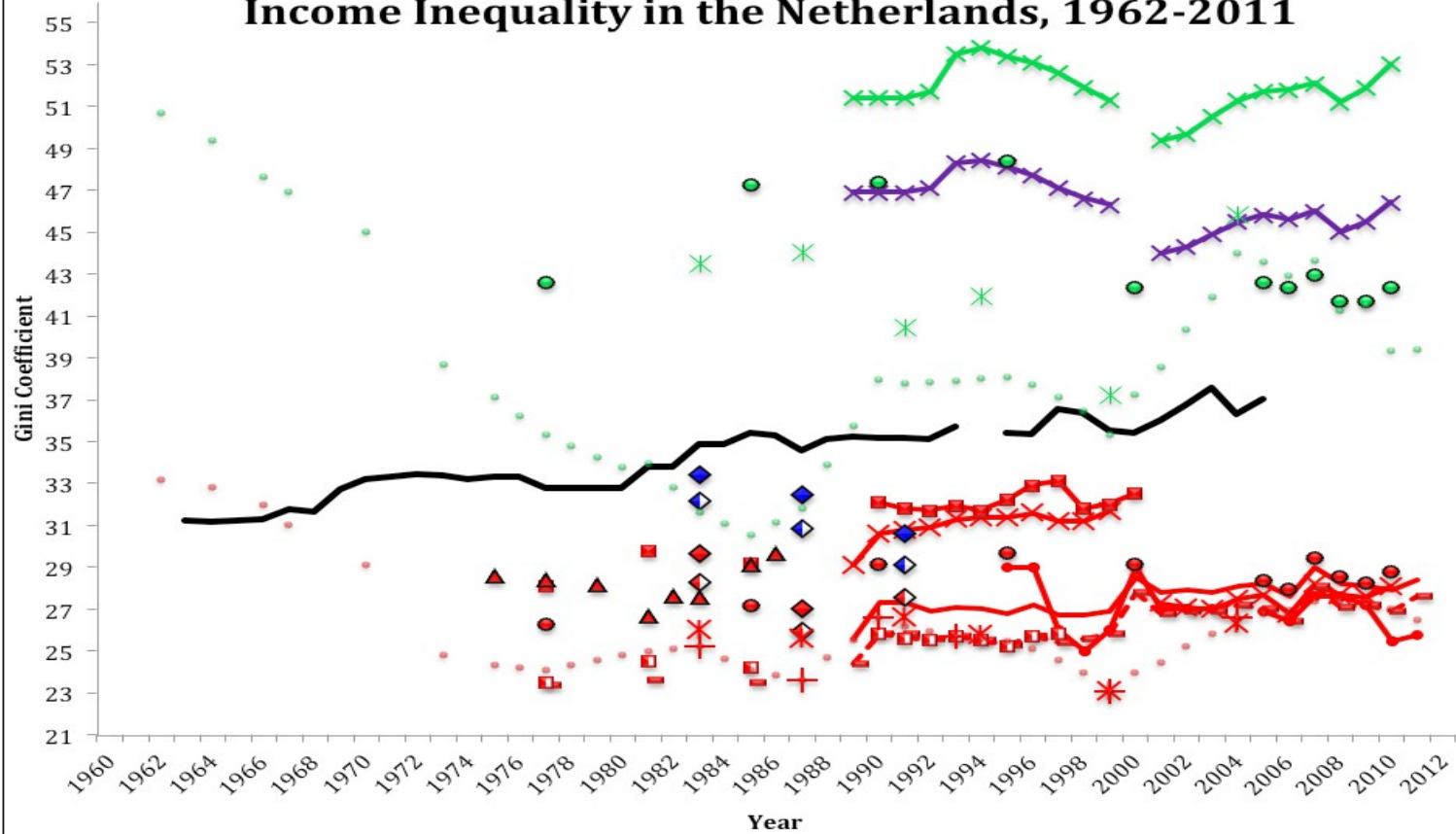
- +— EHII
- ◆ DNS-LIS HH_Gross
- ◆ DNS-LIS Pe_Gross
- Brand 04 HH_Dispatch
- - - Brand 01 Pe_Dispatch
- ■ - Brand 09 HH_Dispatch
- □ - Brand 09 Pe_Dispatch
- ◆ DNS-LIS HH_Net
- ◆ DNS-LIS Pe_Net
- EU-SILC HH_Dispatch
- x - GP HH_Dispatch
- Jaffelli NA_Dispatch
- + LIS Keyfigs HH_Dispatch
- OECD HH_Dispatch
- ▲— Quintano HH_Dispatch
- SWIID HH_Net
- - - WIID2-LIS Pe_Dispatch
- * LBIFRD HH_Primary
- OECD HH_Before taxes, tr
- SWIID HH_Market
- - -> WIID2-LIS Pe_Mon

Income Inequality in Japan, 1960-2010



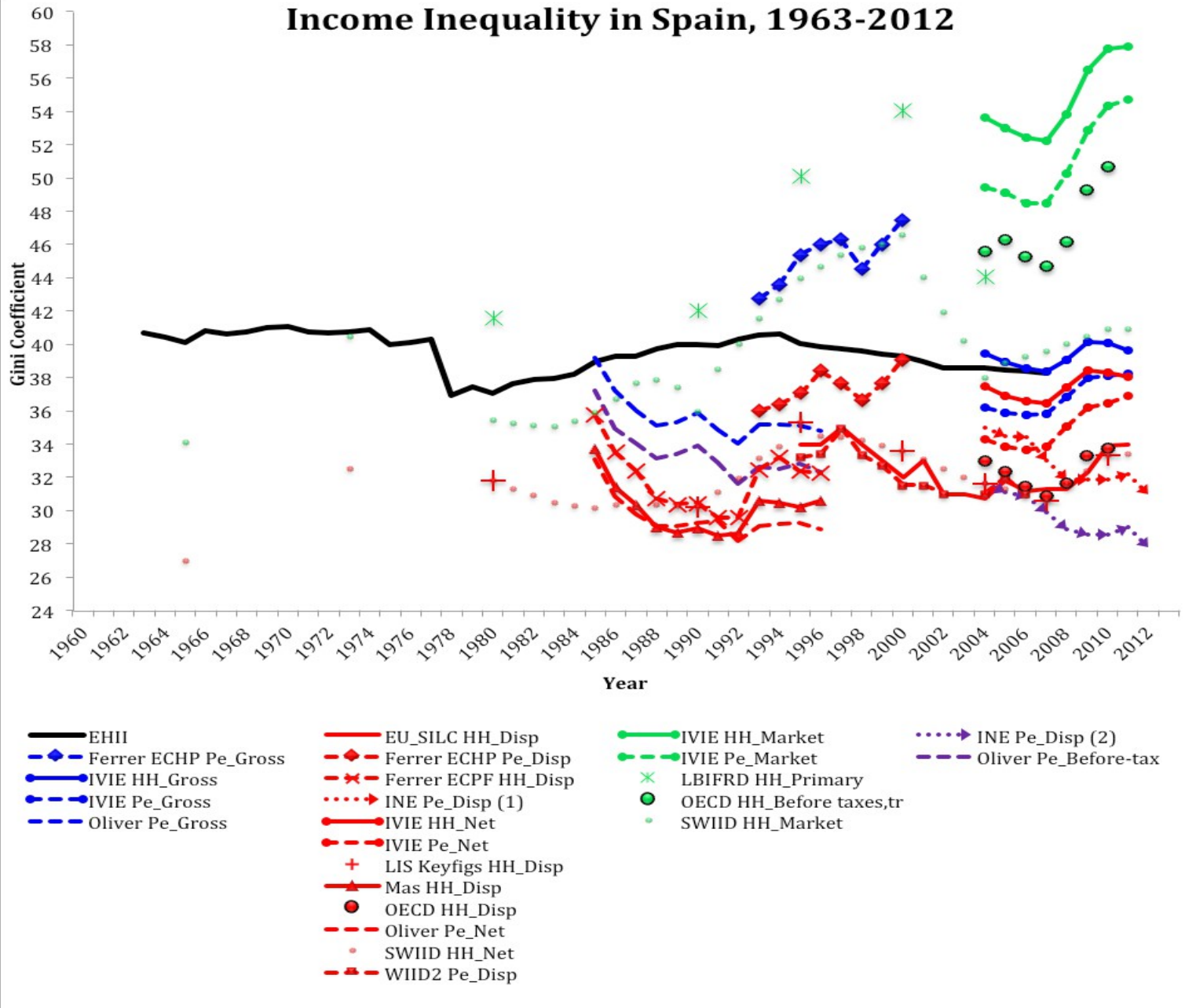
- | | | | |
|----------------------|----------------------|----------------------------|--------------------|
| — EHII | ● OECD HH_Disposable | ● OECD HH_Before Taxes, tr | — Sudo-FIES HH (4) |
| — DNS-LIS HH_Gross | — Sudo-FIES HH (2) | — Sudo-FIES HH (3) | |
| — Sudo-FIES HH (1) | ● SWIID HH_Net | × Sudo-NSFIE HH_Pre-gov | |
| — WIID2-JSP HH_Gross | ▲ Tachibanaki HH (1) | ● SWIID HH_Market | |
| | | ▲ Tachibanaki HH (2) | |

Income Inequality in the Netherlands, 1962-2011

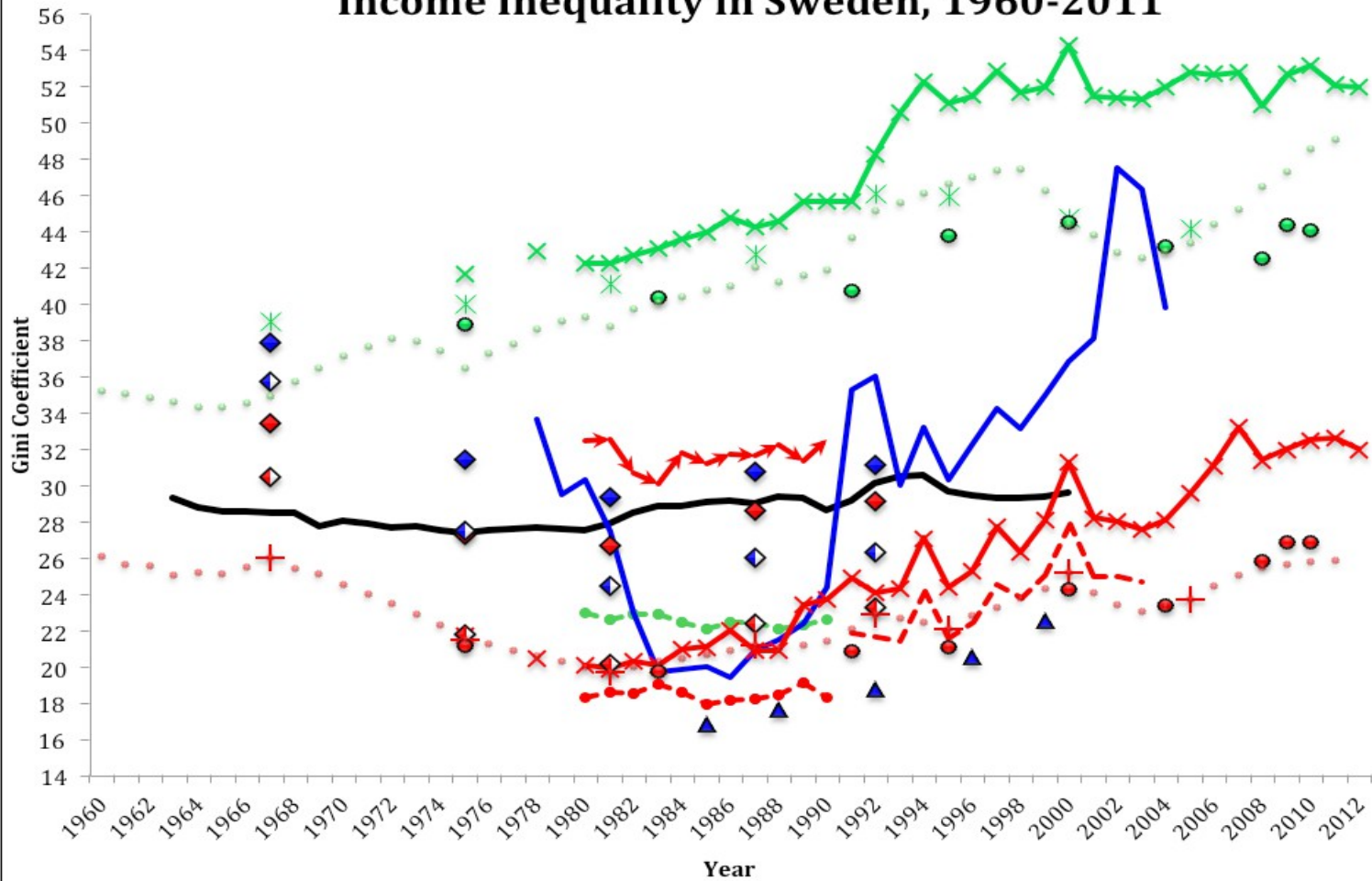


- | | | | |
|--------------------|---------------------------------|---------------------------|------------------------|
| — EHII | —×— Been HH_Dispatch | —×— Been HH_Market (1) | —×— Been HH_Market (2) |
| ◆ DNS-LIS HH_Gross | — CBS HH_Dispatch | × LBIFRD HH_Primary | |
| ◇ DNS-LIS Pe_Gross | - - - CBS Pe_Dispatch | ● OECD HH_Before taxes,tr | |
| | ◆ DNS-LIS HH_Net | ● SWIID HH_Market | |
| | ◇ DNS-LIS Pe_Net | | |
| | ▲ DNS-SY HH_Net | | |
| | ● EU-SILC HH_Dispatch | | |
| | × LBIFRD HH_Dispatch | | |
| | + LIS Keyfigs HH_Dispatch | | |
| | ● OECD HH_Dispatch | | |
| | ● SWIID HH_Net | | |
| | —■— WIID2-CSO HH_Dispatch | | |
| | - - ■ - - WIID2-CSO Pe_Dispatch | | |

Income Inequality in Spain, 1963-2012

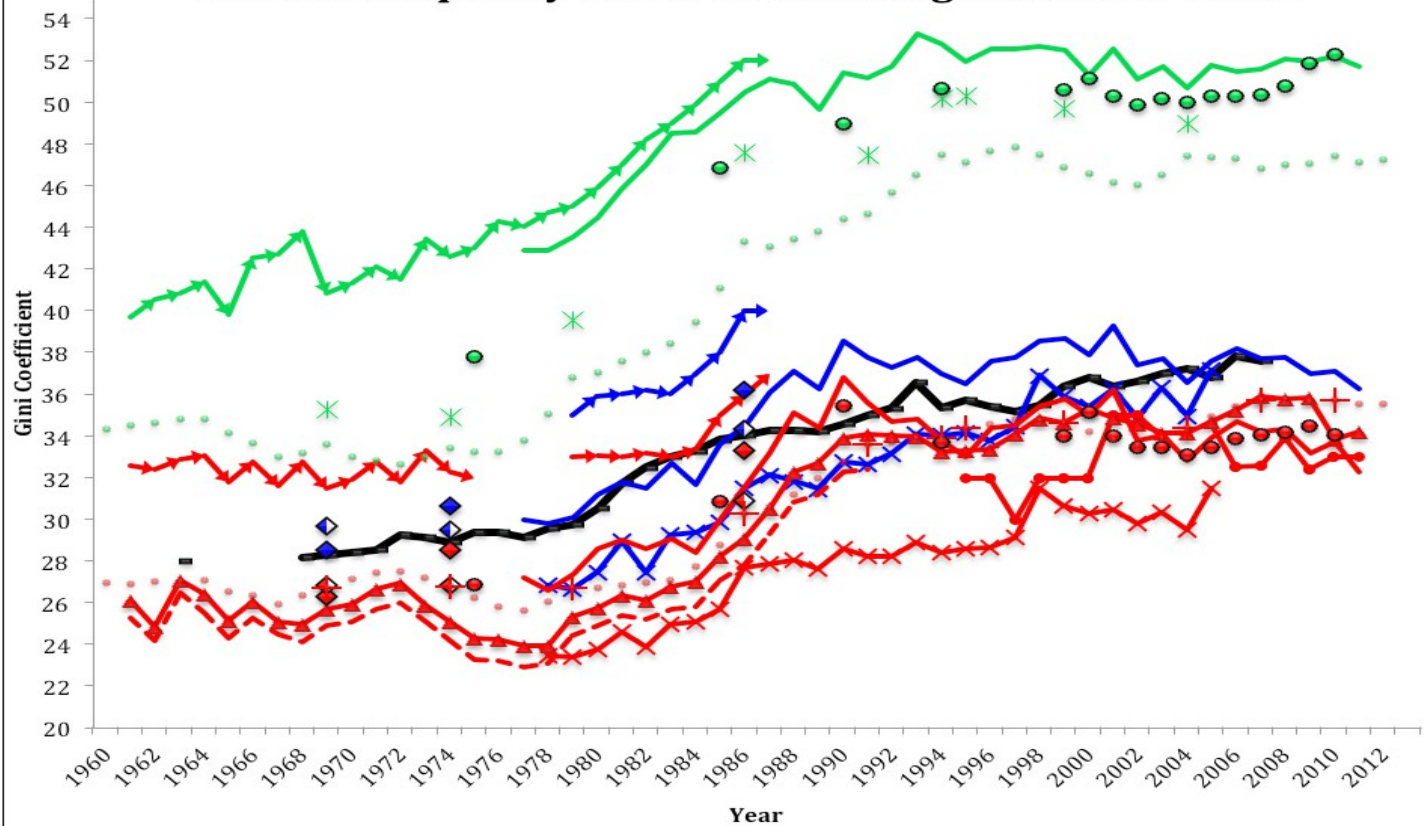


Income Inequality in Sweden, 1960-2011



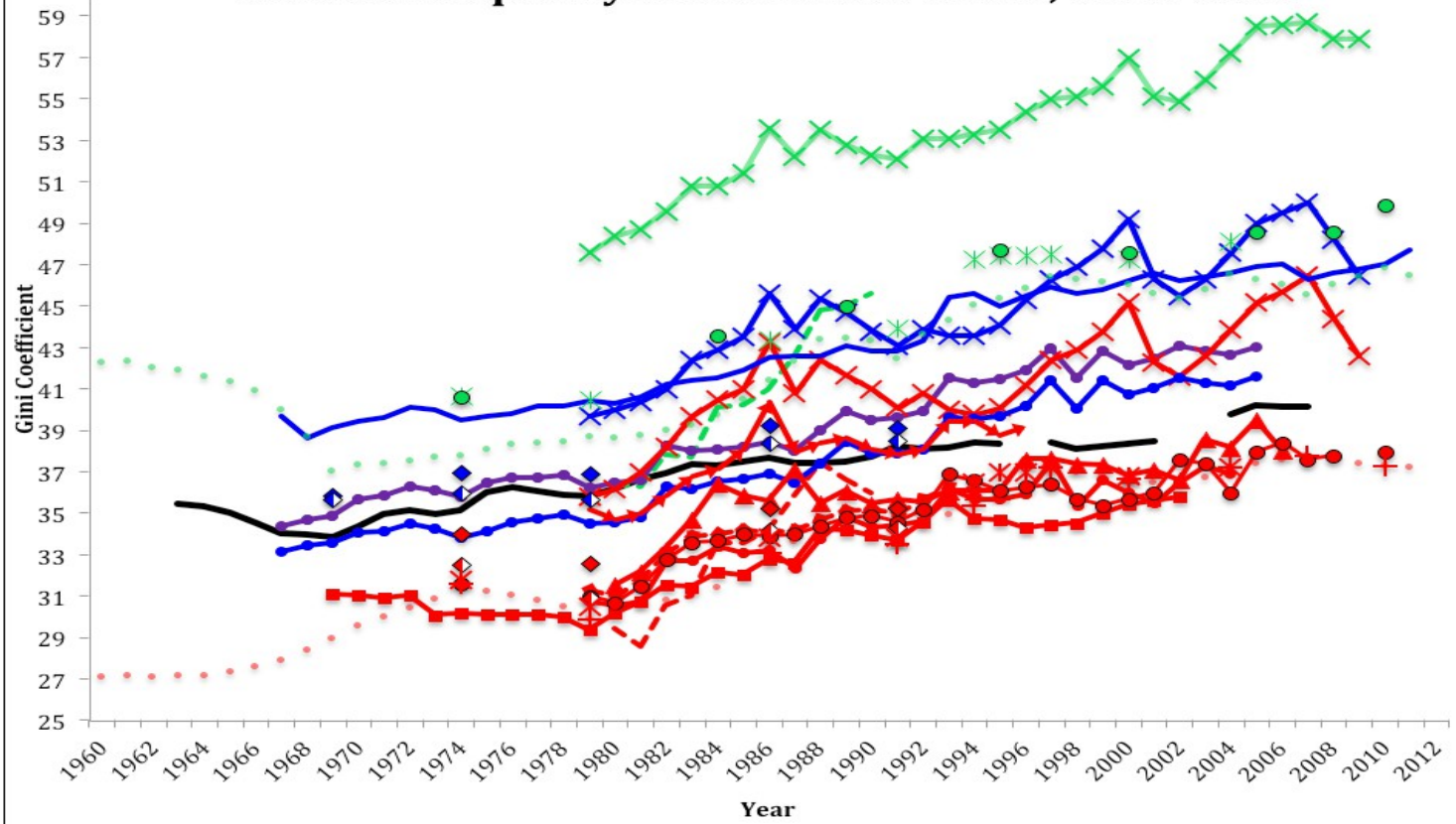
- EHI
- ◆ DNS-LIS HH_Gross
- ◇ DNS-LIS Pe_Gross
- Domeij-LINDA HH_Dis
- ▲ Domeij-HUT HH_Dis
- - - Aaberge Pe_Dis
- ◆ DNS-LIS HH_Net
- ◇ DNS-LIS Pe_Net
- DNS-SAS HH_Net
- + LIS Keyfigs HH_Disposable
- OECD HH_Disposable
- - - Palme Pe_Disposable
- × SCB HH_Disposable
- Aaberge Pe_Market
- × LBIFRD HH_Primary
- OECD HH_Before taxes,tr
- × SCB HH_Factor
- SWIID HH_Market
- SWIID HH_Net

Income Inequality in the United Kingdom, 1960-2012



- | | | |
|---------------------|-----------------------------|---------------------------|
| — EHII | — Atkinson HH_Net | — Atkinson HH_Market |
| — Atkinson HH_Gross | — Blundell HH_Disposable | * LBIFRD HH_Primary |
| — Blundell HH_Gross | — DNS-IFS Pe_Net | ● OECD HH_Before taxes,tr |
| ◆ DNS-LIS HH_Gross | ◆ DNS-LIS HH_Net | — ONS HH_Original |
| ◆ DNS-LIS Pe_Gross | ◆ DNS-LIS Pe_Net | ● SWIID HH_Market |
| — ONS HH_Gross | ● EU-SILC HH_Disposable | |
| | — IFS HH_Net | |
| | + LIS Keyfigs HH_Disposable | |
| | ● OECD HH_Disposable | |
| | — ONS HH_Disposable | |
| | ● SWIID HH_Net | |

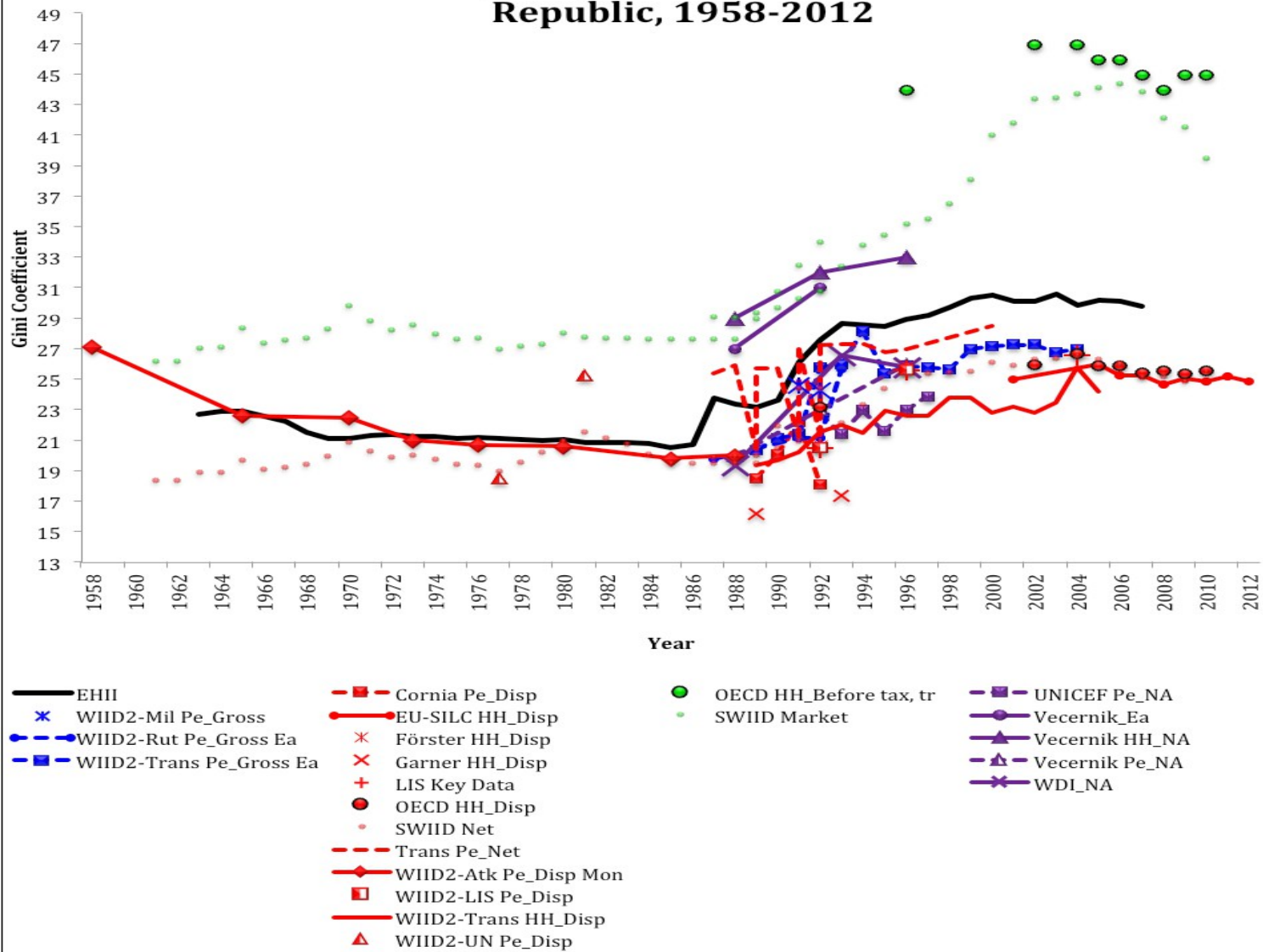
Income Inequality in the United States, 1960-2011



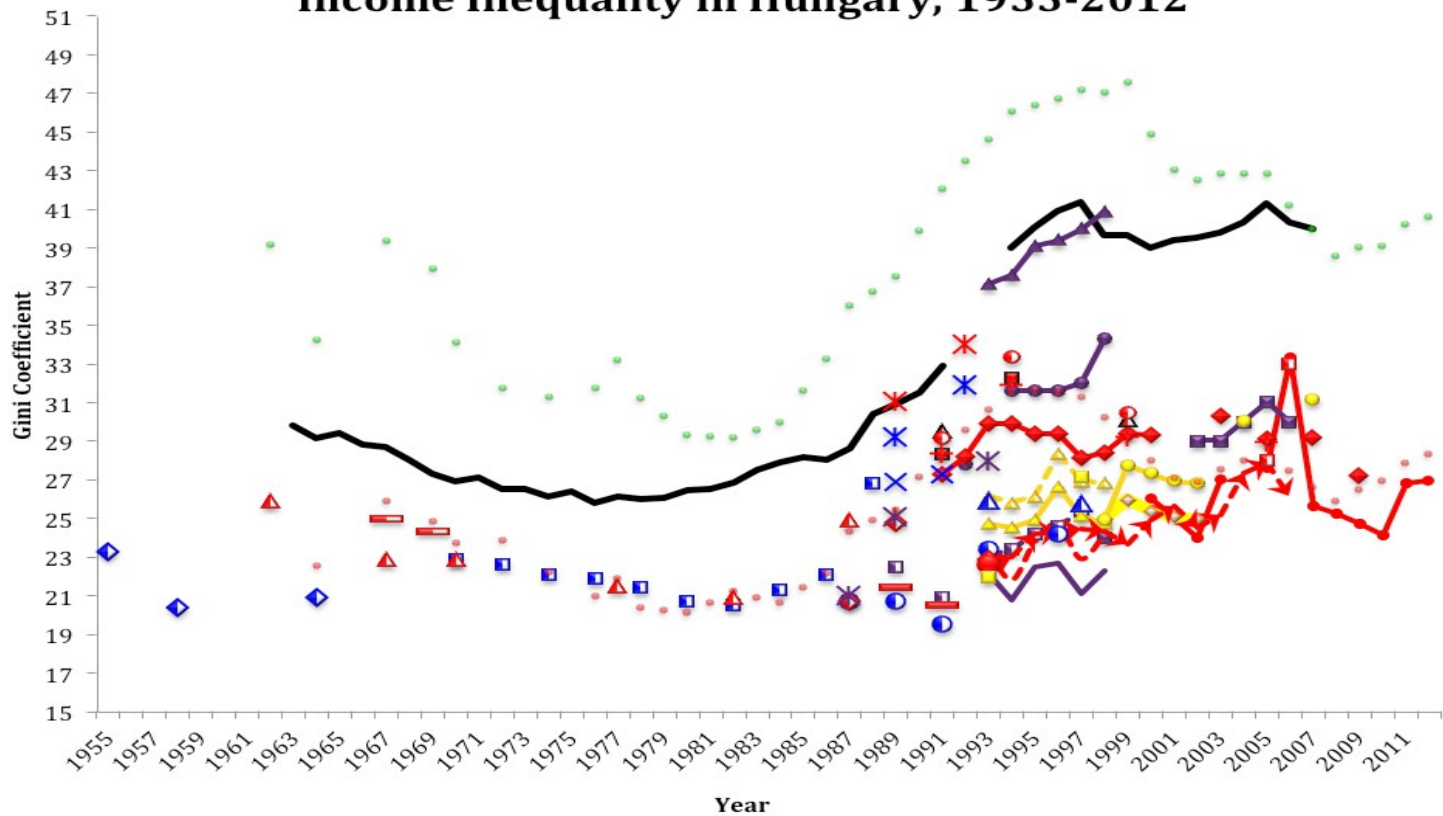
- | | | | |
|------------------------|--------------------------------|----------------------------|--------------------------|
| — EHI1 | - - - Aaberge Pe_Dispatch | - - - Aaberge Pe_Market | —●— Heathcote HH_Pre-gov |
| —x— CBO HH_Before-tax | -x- CBO HH_After-tax | -x- CBO HH_Market | |
| ◆ DNS-LIS HH_Gross | ◆ DNS-LIS HH_Net | * LBIFRD HH_Primary | |
| ◇ DNS-LIS Pe_Gross | ◇ DNS-LIS Pe_Net | ● OECD HH_Before taxes, tr | |
| —●— Heathcote HH_Gross | —◆— Gottschalk Pe_Dispatch | ● SWIID HH_Market | |
| — USCBB HH_Gross | —▲— Heathcote-CEX HH_Dispatch | | |
| | —●— Heathcote-CPS HH_Dispatch | | |
| | —■— Heathcote-PSID HH_Dispatch | | |
| | -x- LBIFRD HH_Dispatch | | |
| | + LIS Keyfigs HH_Dispatch | | |
| | —●— OECD HH_Dispatch | | |
| | ● SWIID HH_Net | | |
| | —■— WIID2 HH_Dispatch | | |

“Transition Economies”

Income Inequality in Czechslovakia and Czech Republic, 1958-2012

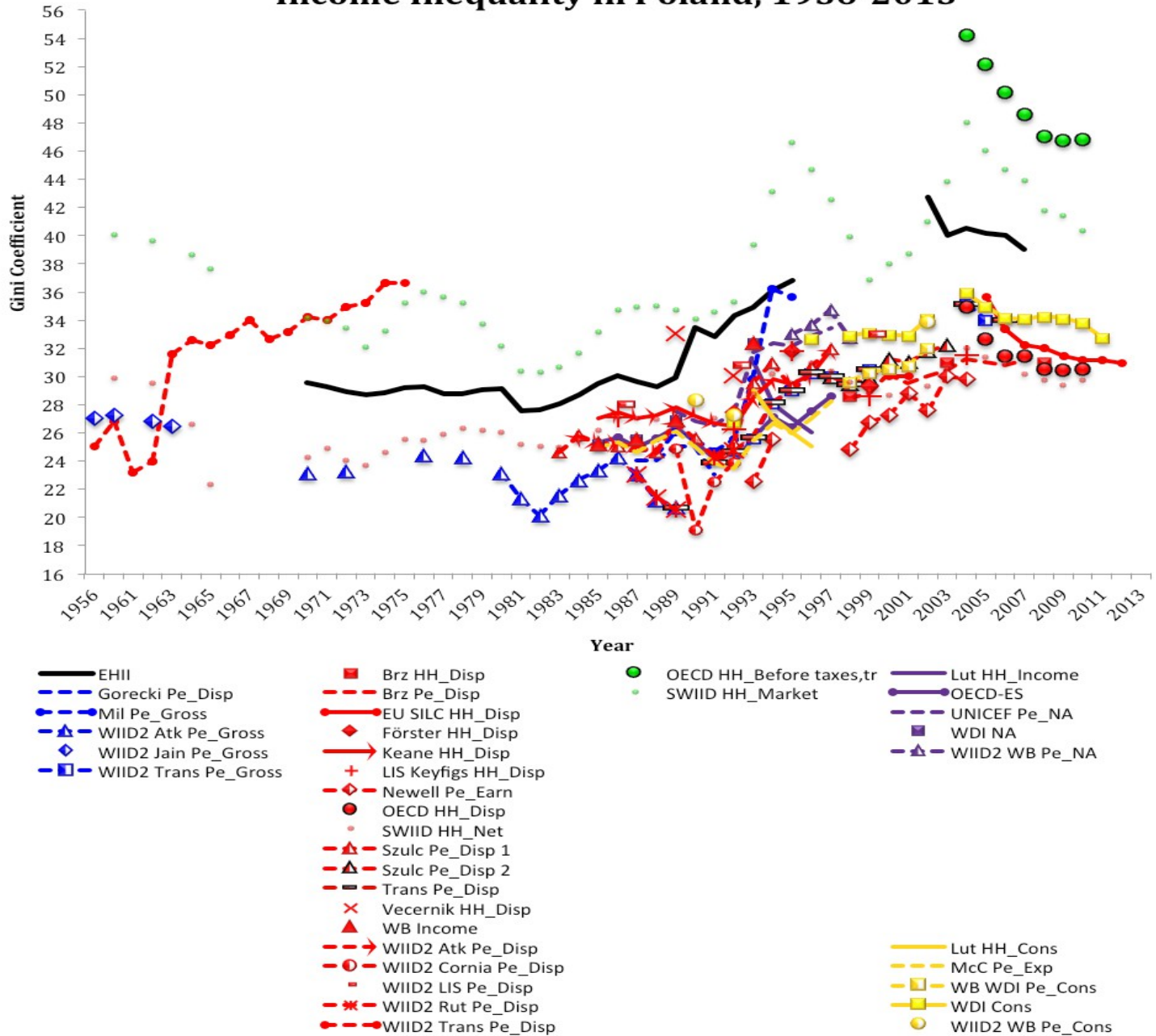


Income Inequality in Hungary, 1955-2012



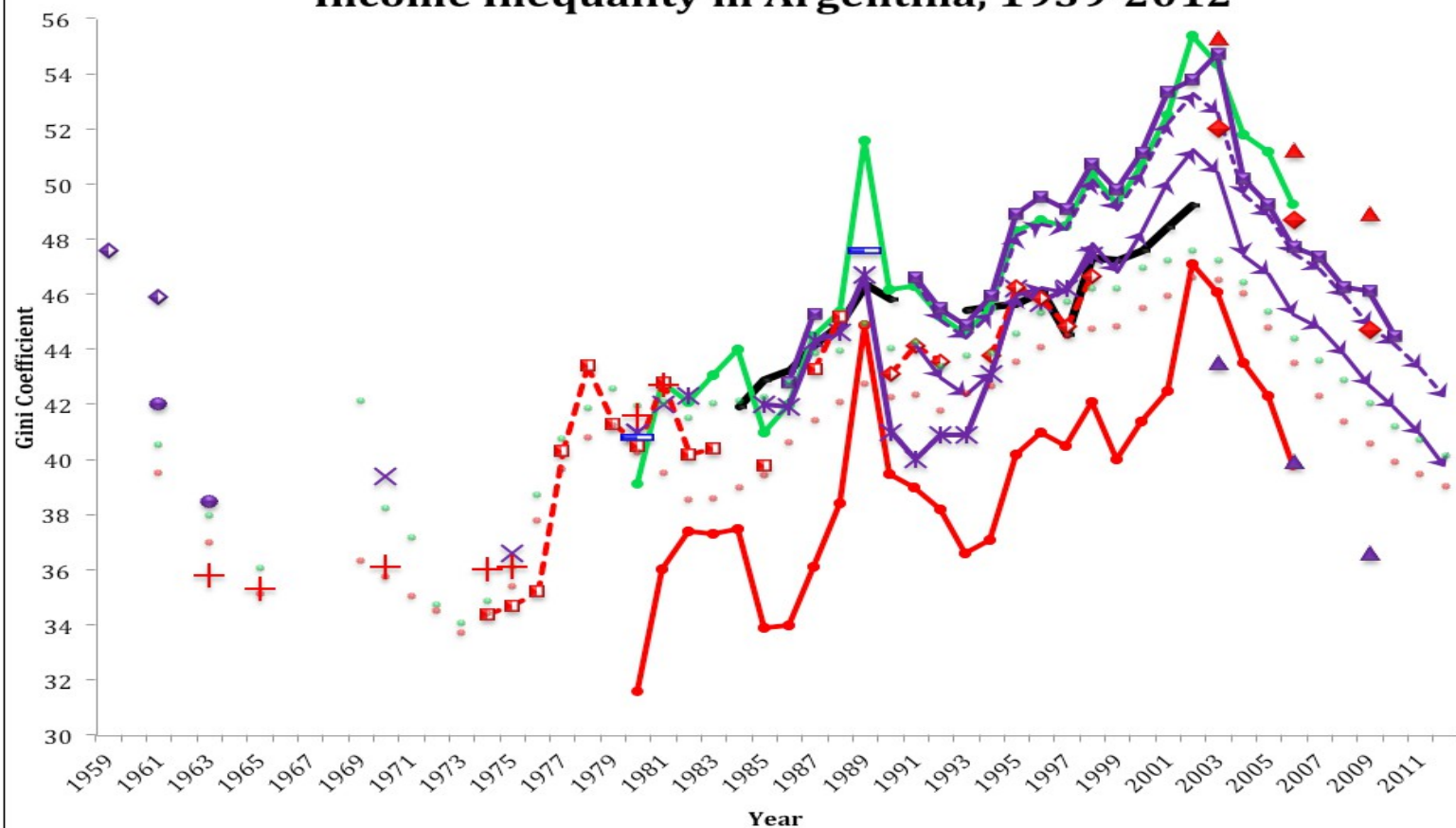
- | | | | |
|-----------------------|--------------------------|----------------|---------------------|
| — EHII | — EU SILC HH_Dis | • SWIID Market | — Andorka HH_NA |
| ○ Kat Pe_Gross | ■ Förster HH_Dis | | — Kapit HH_Earn |
| □ WIID2 Atk Pe_Gross | - - Kapit Pe_Dis | | — Kapit HH_Income |
| × WIID2 Cornia_Gross | + LIS Keyfigs HH_Dis | | — Med HH_NA |
| ▲ WIID2 D&S Pe_Gross | ◇ Mil Pe_Dis | | — UNICEF Pe_NA |
| ◆ WIID2 Jain Pe_Gross | — OECD HH_Dis | | × WDI Income |
| × WIID2 Vec Pe_Gross | • SWIID Net | | |
| | × Vec HH_Dis | | |
| | ▲ WIID2 Atk Pe_Dis | | |
| | - - WIID2 Cornia_Dis | | |
| | ■ WIID2 EU Pe_Dis | | |
| | - - WIID2 Jain Pe_Dis | | |
| | ▲ WIID2 LIS Pe_Dis | | |
| | ○ WIID2 LIS Pe_Dis Mon | | |
| | ● WIID2 Mil Pe_Dis | | |
| | - - > WIID2 Trans Pe_Dis | | |
| | | | ▲ Kapit HH_Exp |
| | | | — Kapit Pe_Exp |
| | | | ◇ WB WDI Pe_Cons |
| | | | ○ WDI Cons |
| | | | ■ WIID2 D&S Pe_Cons |

Income Inequality in Poland, 1956-2013



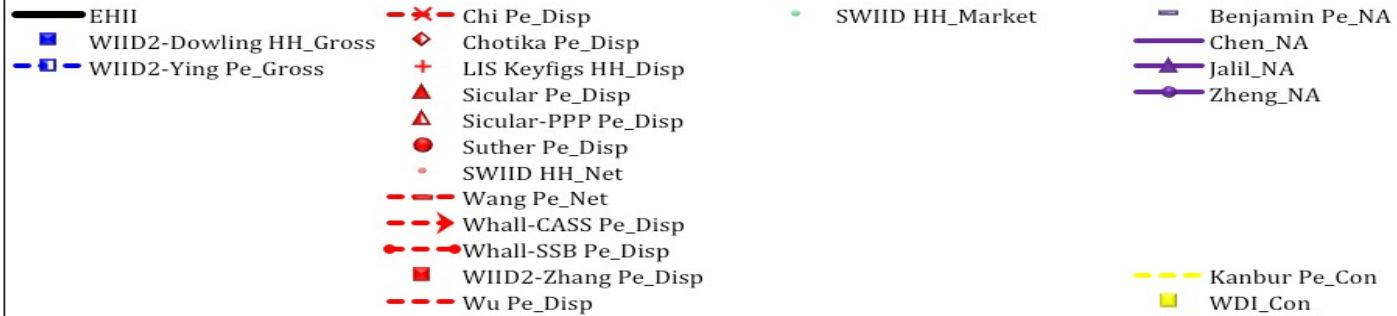
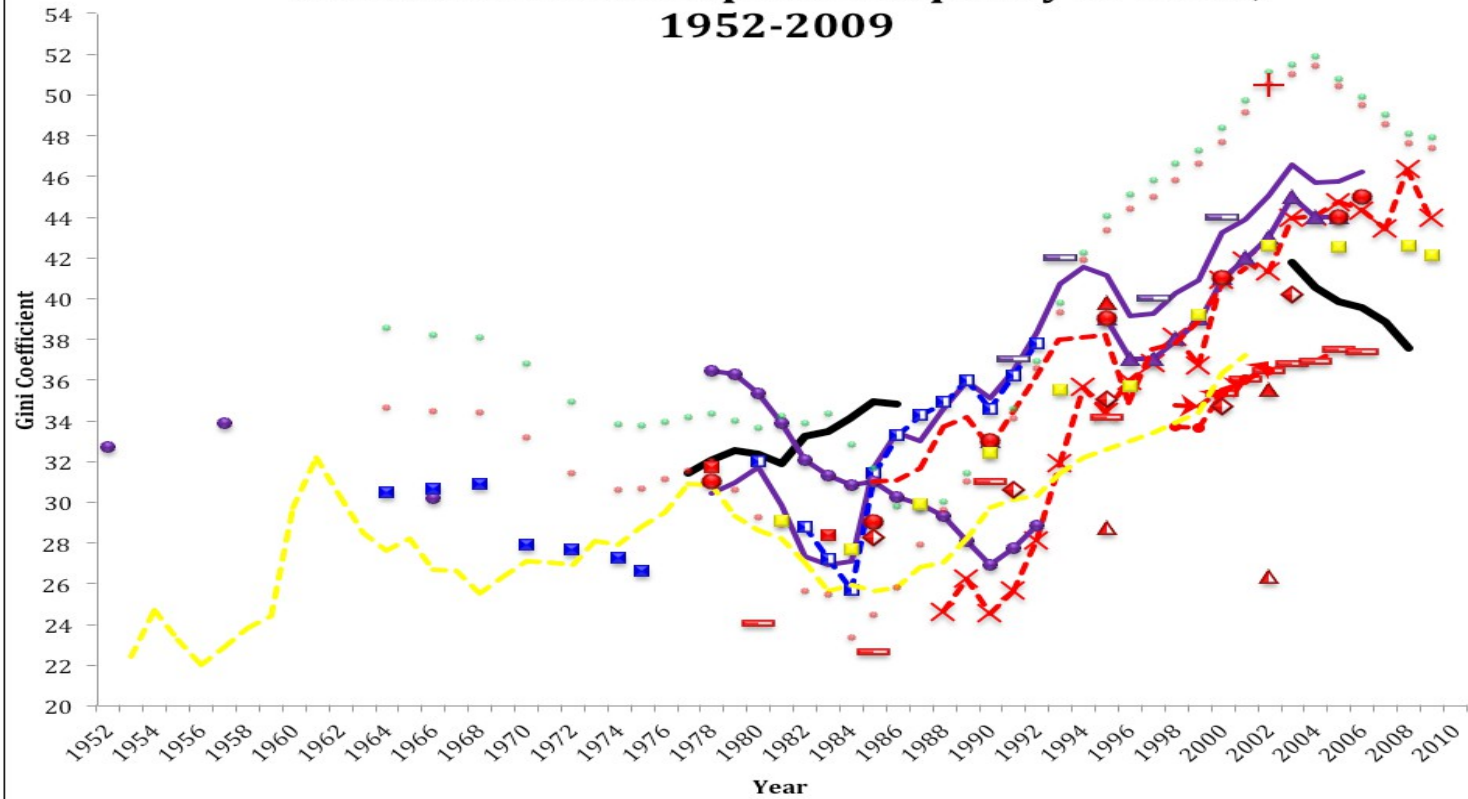
“Developing Countries”

Income Inequality in Argentina, 1959-2012

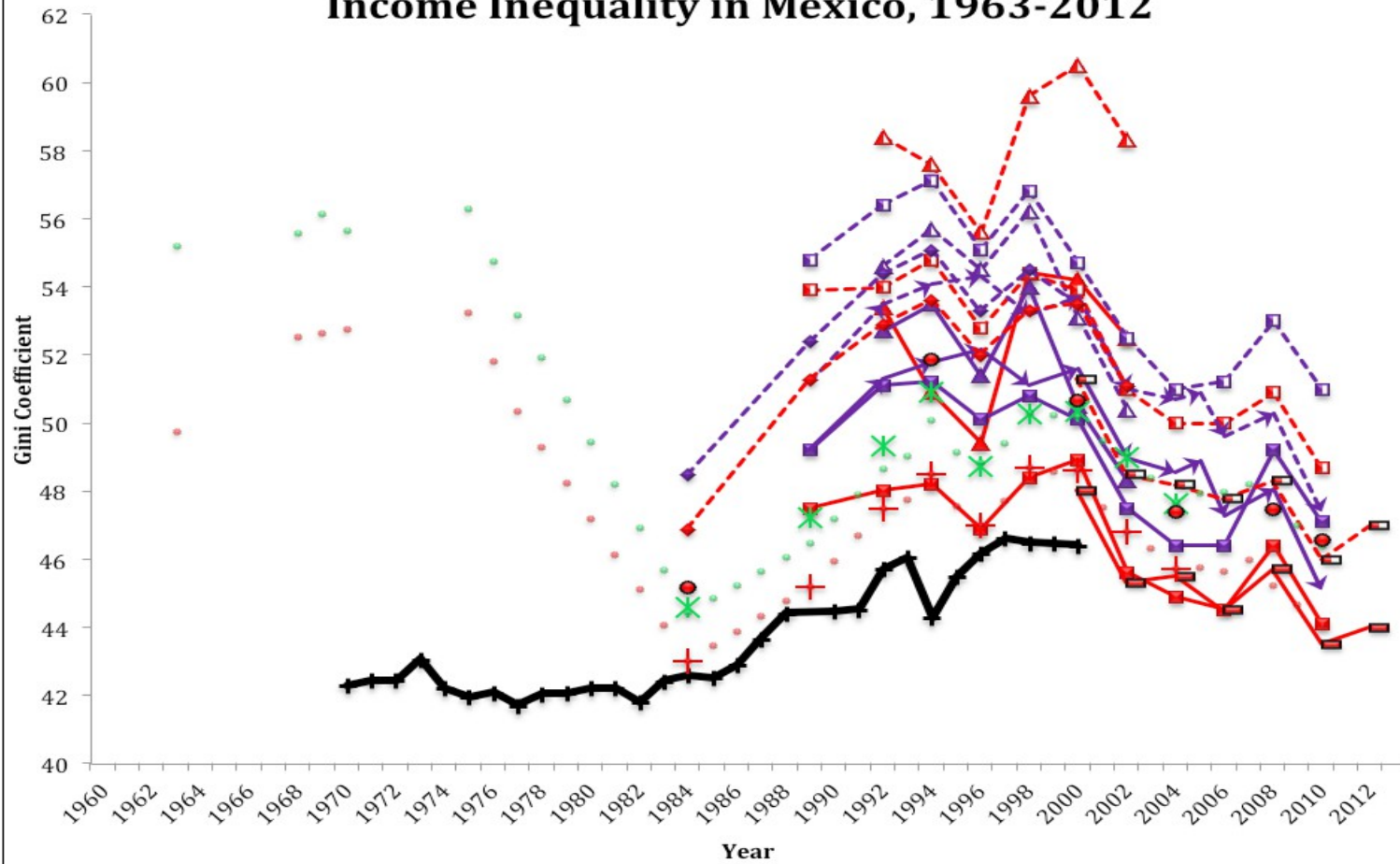


- EHII
- Psach Pe_Gross
- Cruces NA_Dis
- Lustig NA_Dis
- Lustig NA_Net Mkt
- SWIID HH_Net
- WIID2-Alt HH_Dis
- WIID2-Cer Pe_Dis
- WIID2-Fis Pe_Dis
- Cruces NA_Market
- SWIID HH_Market
- DNS-Alt Pe_Cap NA
- DNS-Alt Pe_NA
- DNS-Jain HH_NA
- Escudero HH_NA
- Lustig NA_Final
- SEDLAC HH_Total
- SEDLAC Pe_Total
- WDI_NA

Income and Consumption Inequality in China, 1952-2009



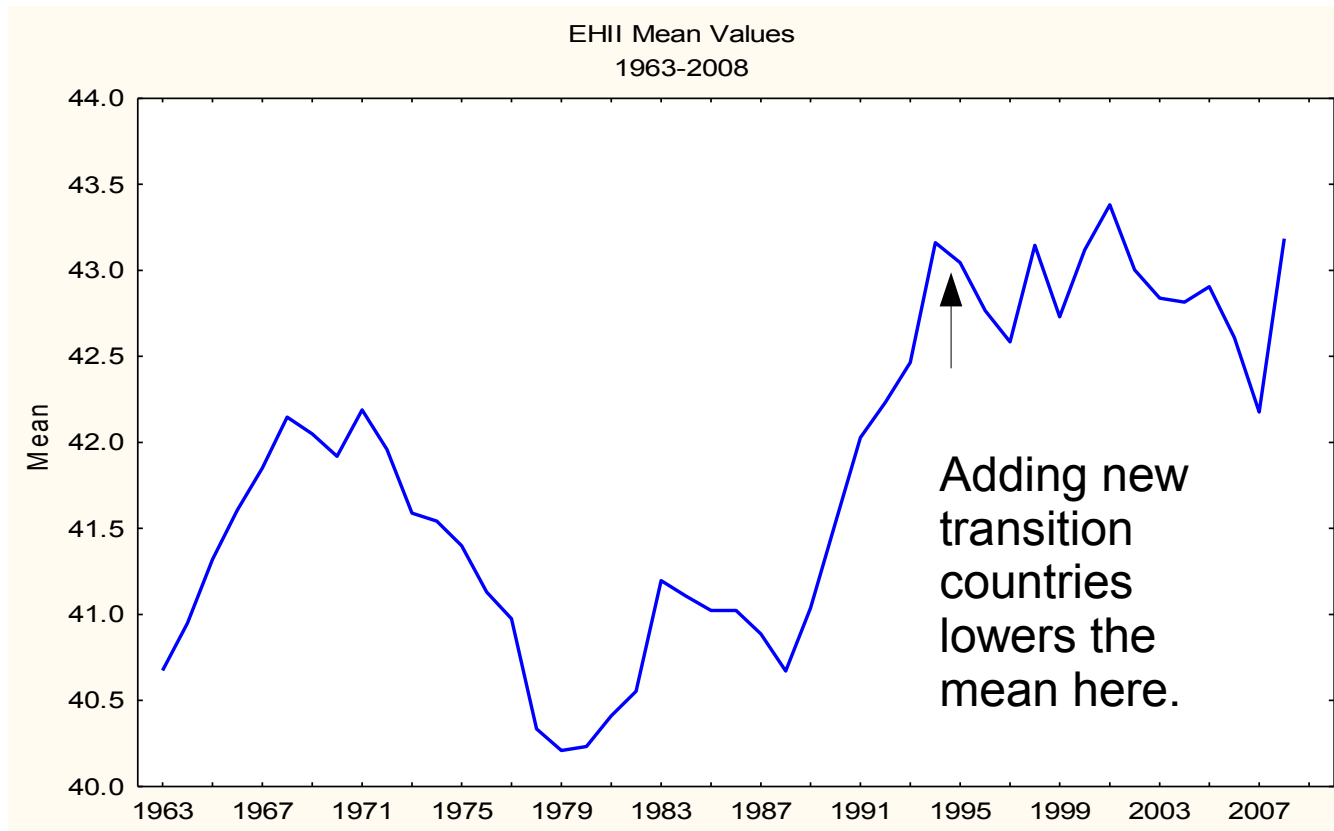
Income Inequality in Mexico, 1963-2012



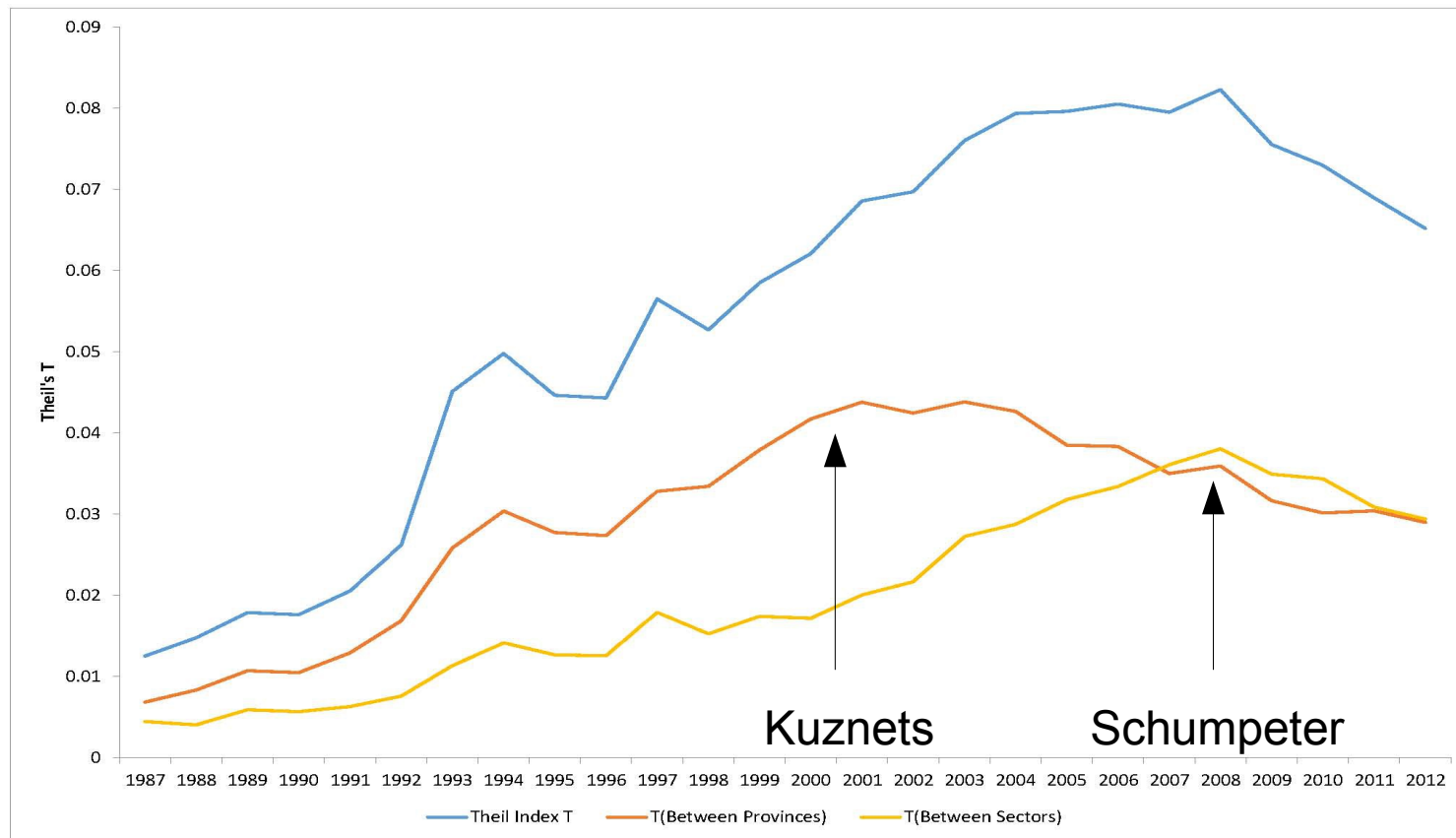
- | | | | |
|-------------------------|-------------------------|-------------------------|-------------------------|
| EHII | Borraz HH_Total | LBIFRD HH_Primary | Borraz HH_Mon |
| Borraz Pe_Total | SWIID HH_Market | Campos HH_Mon | Campos Pe_Mon |
| Campos HH_Total | Campos Pe_Total | INEGI HH_Total | INEGI Pe_Total |
| Campos Pe_Total | INEGI HH_Total | INEGI Pe_Total | LIS Keyfigs HH_Dispatch |
| INEGI HH_Total | INEGI Pe_Total | LIS Keyfigs HH_Dispatch | OECD HH_Dispatch |
| INEGI Pe_Total | LIS Keyfigs HH_Dispatch | OECD HH_Dispatch | SWIID HH_Net |
| LIS Keyfigs HH_Dispatch | OECD HH_Dispatch | SWIID HH_Net | WIID2-LIS Pe_Dispatch |
| OECD HH_Dispatch | SWIID HH_Net | WIID2-LIS Pe_Dispatch | |
| SWIID HH_Net | | | |
| WIID2-LIS Pe_Dispatch | | | |

Global Mean Values

EHI Gini Coefficients



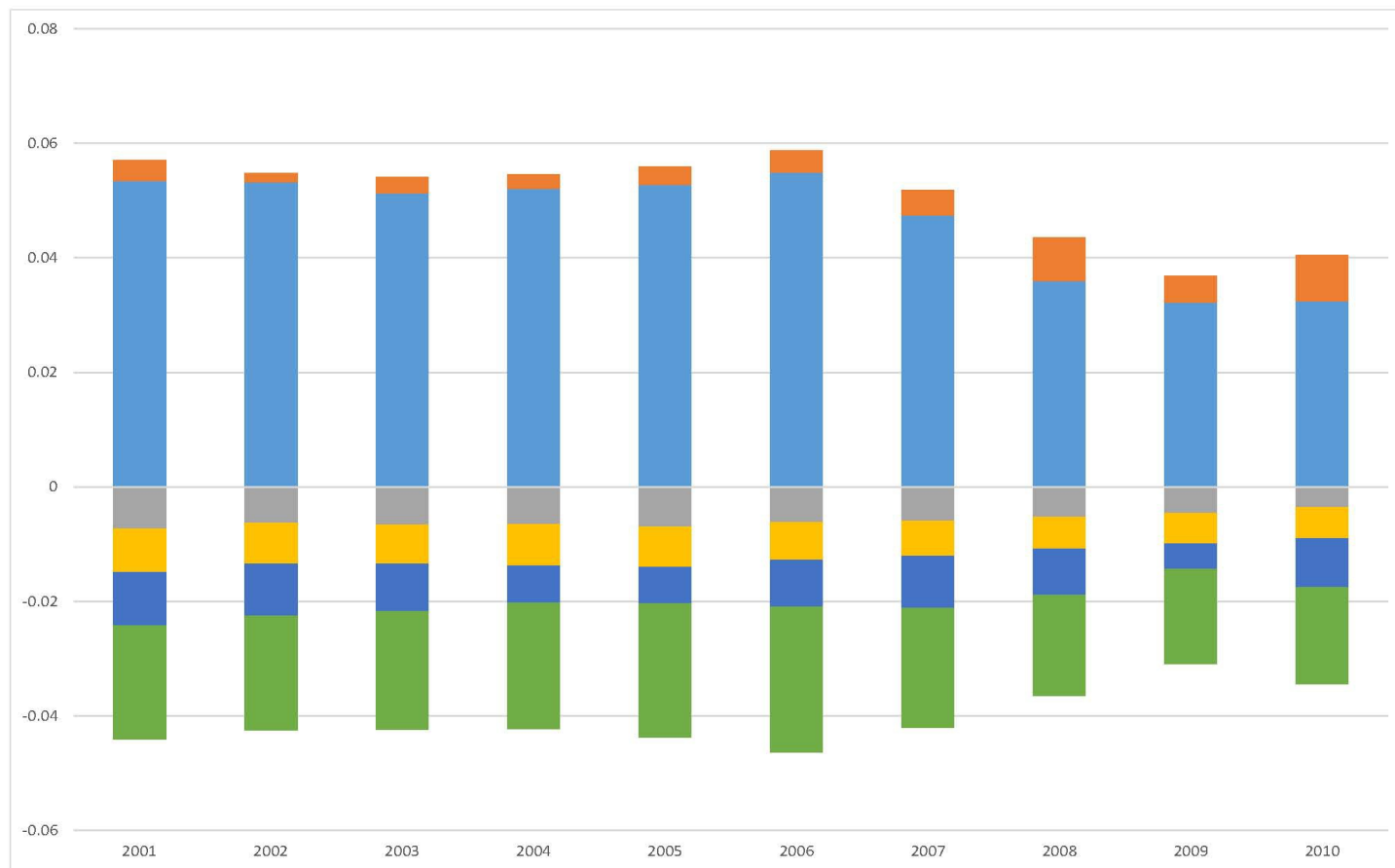
Decomposing Inequality in China



Data from the State Statistical Yearbook
Calculations by UTIP

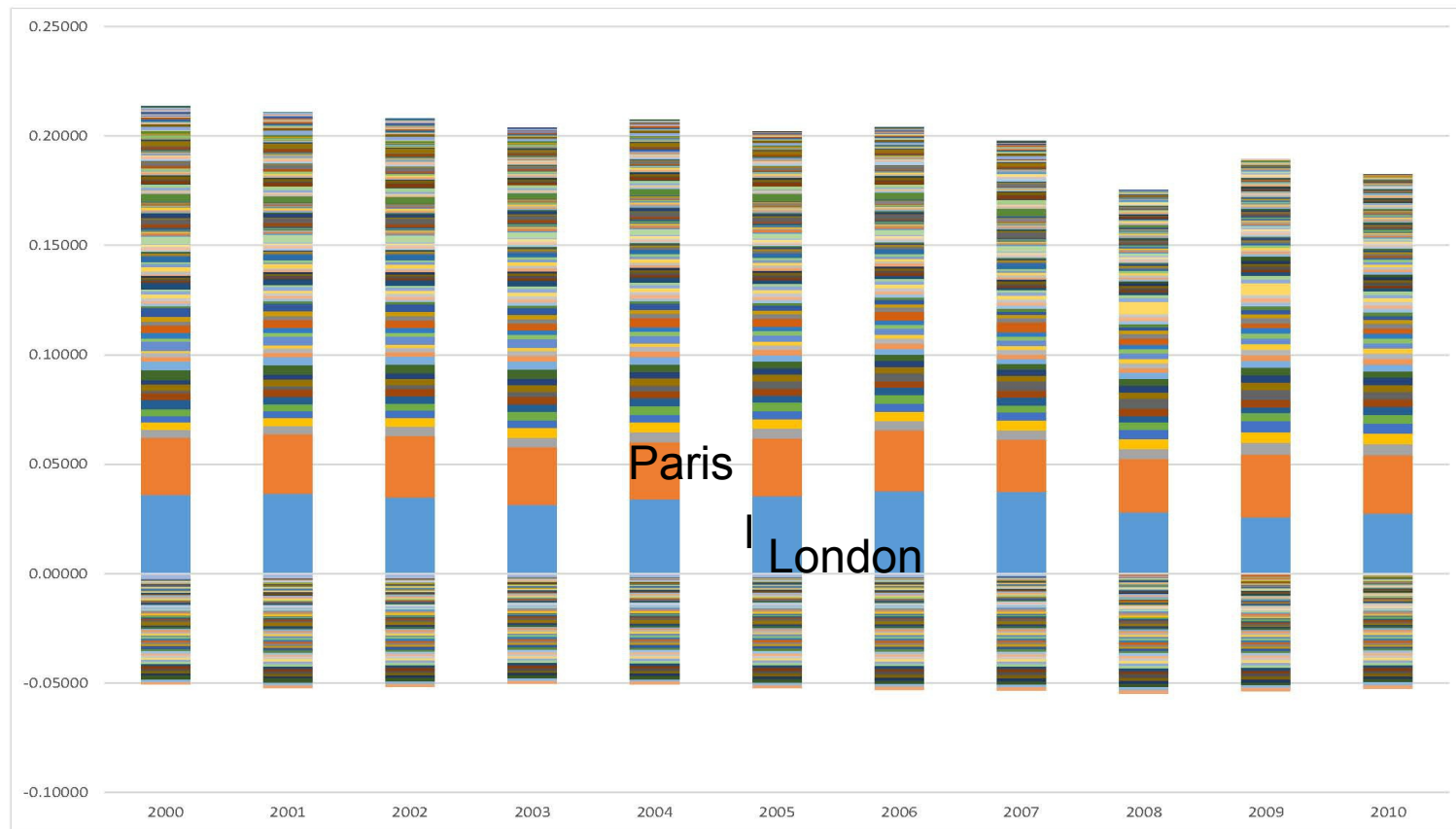
Decomposing Europe by Sector

Blue is for Finance



Decomposing Europe by Region

or, Compared to Everything Else, London and Paris are *Really Rich*



New Evidence from Data on Industrial Pay

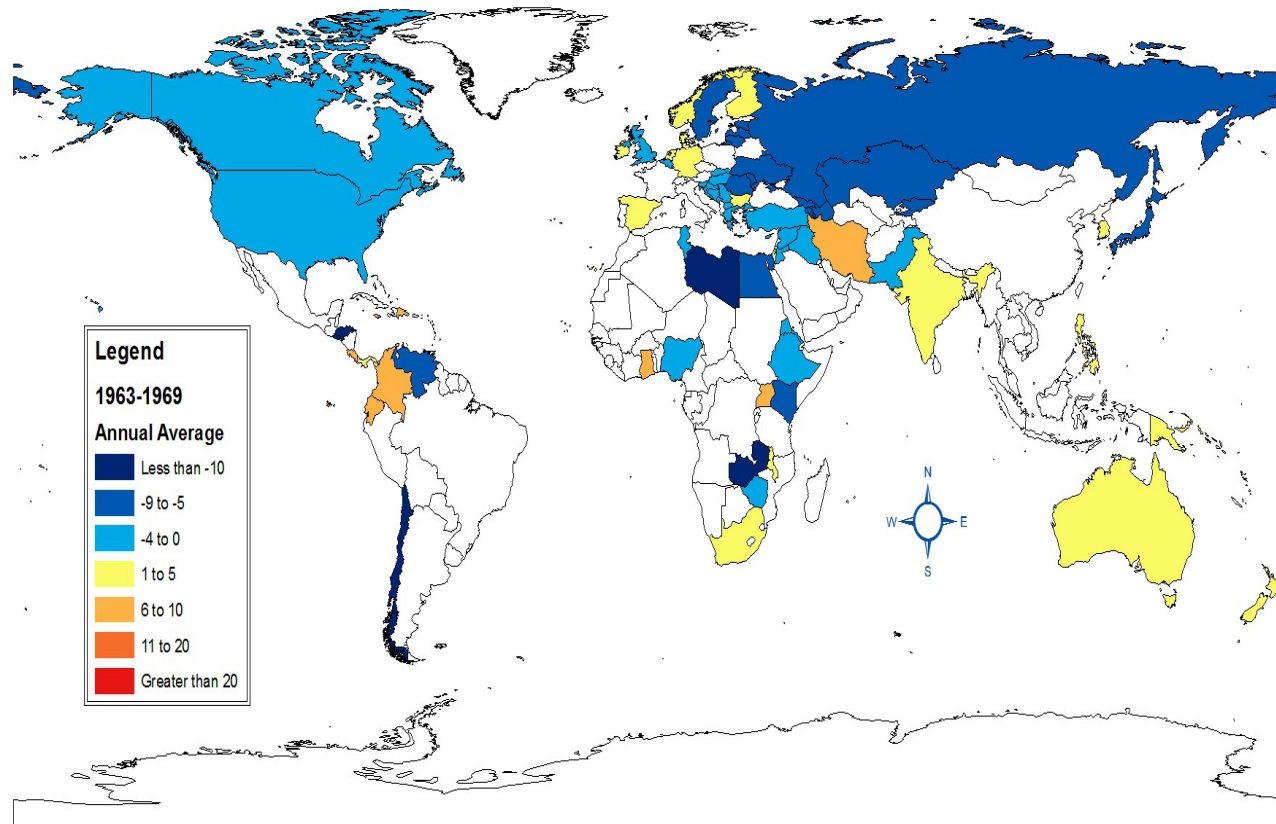
1963-2008

Maps show *changes* in UTIP-UNIDO over six year intervals

Calculated as the Between-Groups Component
of Theil's T Statistic
Across Industrial Categories
from UNIDO
Industrial Statistics

UTIP-UNIDO Theil Coefficients: Annual Rates of Change

1963-1969



1) For the countries of the former USSR, (Azerbaijan, Armenia, Estonia, Georgia, Kazakhstan, Kyrgystan, Latvia, Lithuania, Moldova, and Ukraine) data for the USSR was substituted for the years before the breakup.

2) For the countries of former Yugoslavia, (Bosnia and Herzegovina, Croatia, Slovenia, The former Yugoslavic Republic of Macedonia, Serbia, and Montenegro) data for Yugoslavia was substituted for the years before the breakup.

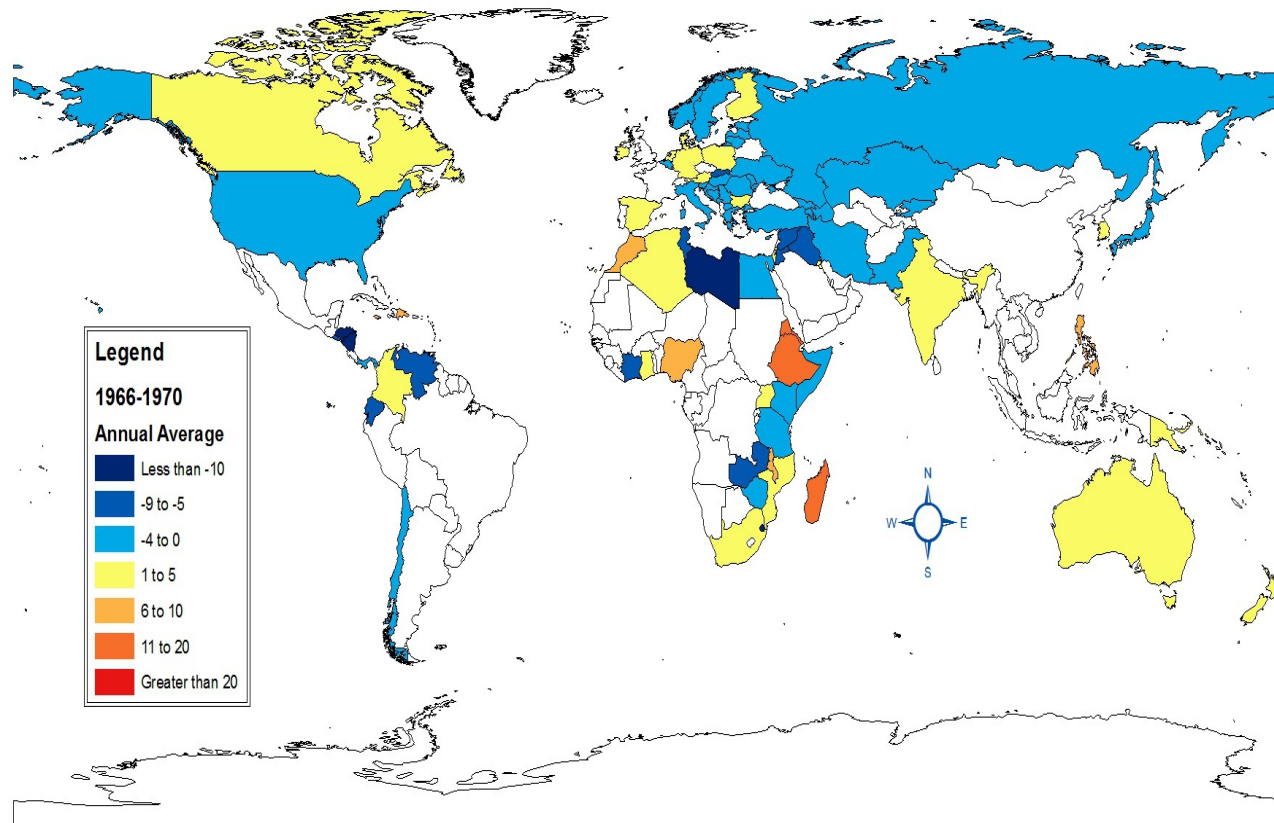
3) For Slovakia, data before 1990 is filled in from Czechoslovakia, since Slovakia only became a country in 1993.

Map by: Aleksandra Malinowska

Data: Amin Shams, Beatrice Halbach, Jaehee Choi, Aleksandra Malinowska

UTIP-UNIDO Theil Coefficients: Annual Rates of Change

1966-1970



1) For the countries of the former USSR, (Azerbaijan, Armenia, Estonia, Georgia, Kazakhstan, Kyrgystan, Latvia, Lithuania, Moldova, and Ukraine) data for the USSR was substituted for the years before the breakup.

2) For the countries of former Yugoslavia, (Bosnia and Herzegovina, Croatia, Slovenia, The former Yugoslavic Republic of Macedonia, Serbia, and Montenegro) data for Yugoslavia was substituted for the years before the breakup.

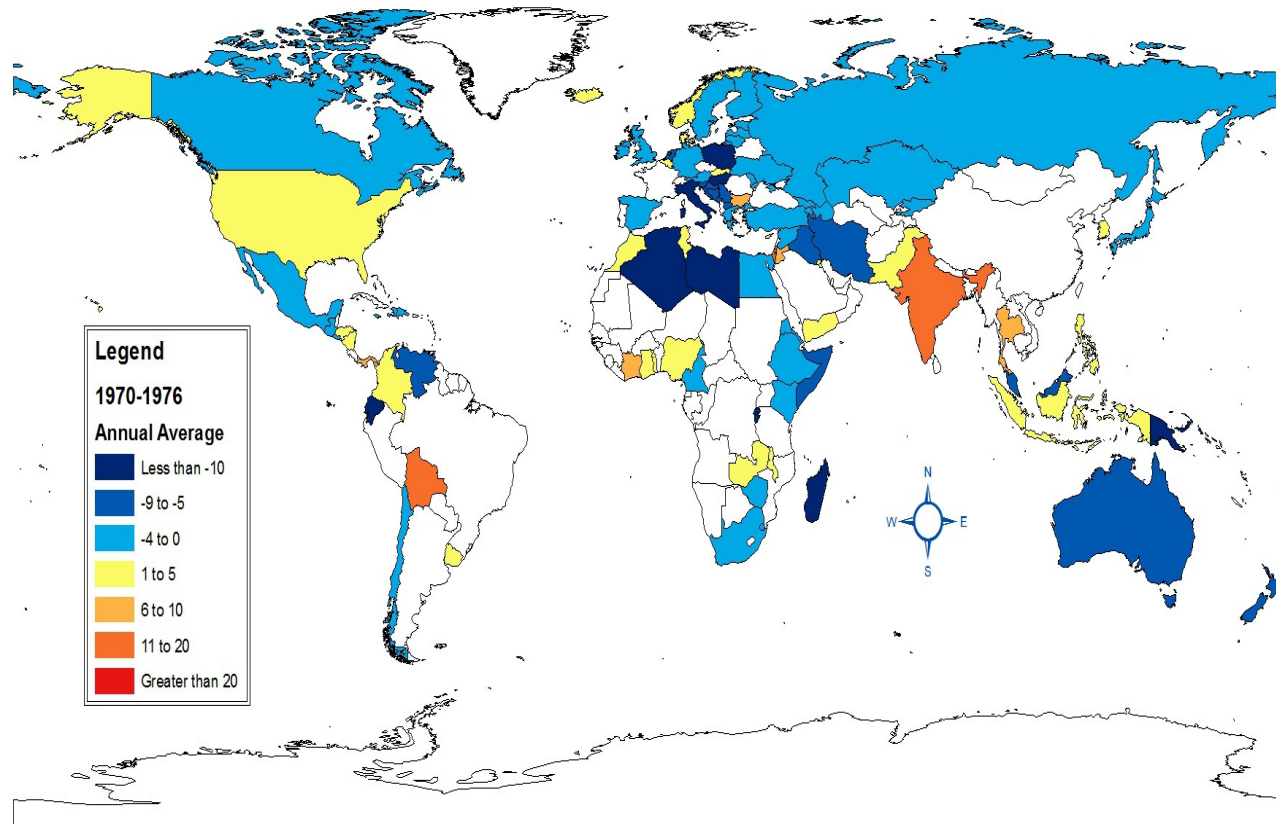
3) For Slovakia, data before 1990 is filled in from Czechoslovakia, since Slovakia only became a country in 1993.

Map by: Aleksandra Malinowska

Data: Amin Shams, Beatrice Halbach, Jaehee Choi, Aleksandra Malinowska

UTIP-UNIDO Theil Coefficients: Annual Rates of Change

1970-1976



1) For the countries of the former USSR, (Azerbaijan, Armenia, Estonia, Georgia, Kazakhstan, Kyrgystan, Latvia, Lithuania, Moldova, and Ukraine) data for the USSR was substituted for the years before the breakup.

2) For the countries of former Yugoslavia, (Bosnia and Herzegovina, Croatia, Slovenia, The former Yugoslavic Republic of Macedonia, Serbia, and Montenegro) data for Yugoslavia was substituted for the years before the breakup.

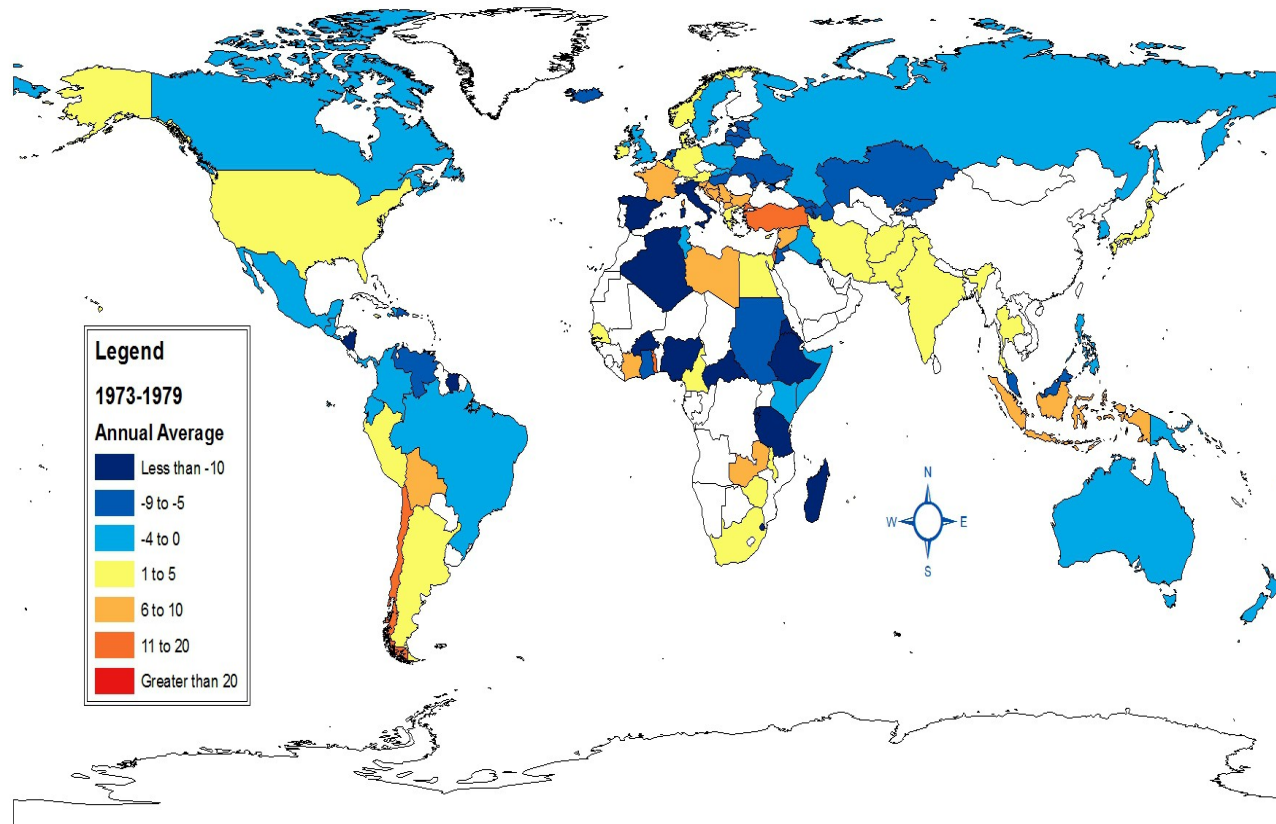
3) For Slovakia, data before 1990 is filled in from Czechoslovakia, since Slovakia only became a country in 1993.

Map by: Aleksandra Malinowska

Data: Amin Shams, Beatrice Halbach, Jaehee Choi, Aleksandra Malinowska

UTIP-UNIDO Theil Coefficients: Annual Rates of Change

1973-1979



1) For the countries of the former USSR, (Azerbaijan, Armenia, Estonia, Georgia, Kazakhstan, Kyrgystan, Latvia, Lithuania, Moldova, and Ukraine) data for the USSR was substituted for the years before the breakup.

2) For the countries of former Yugoslavia, (Bosnia and Herzegovina, Croatia, Slovenia, The former Yugoslavic Republic of Macedonia, Serbia, and Montenegro) data for Yugoslavia was substituted for the years before the breakup.

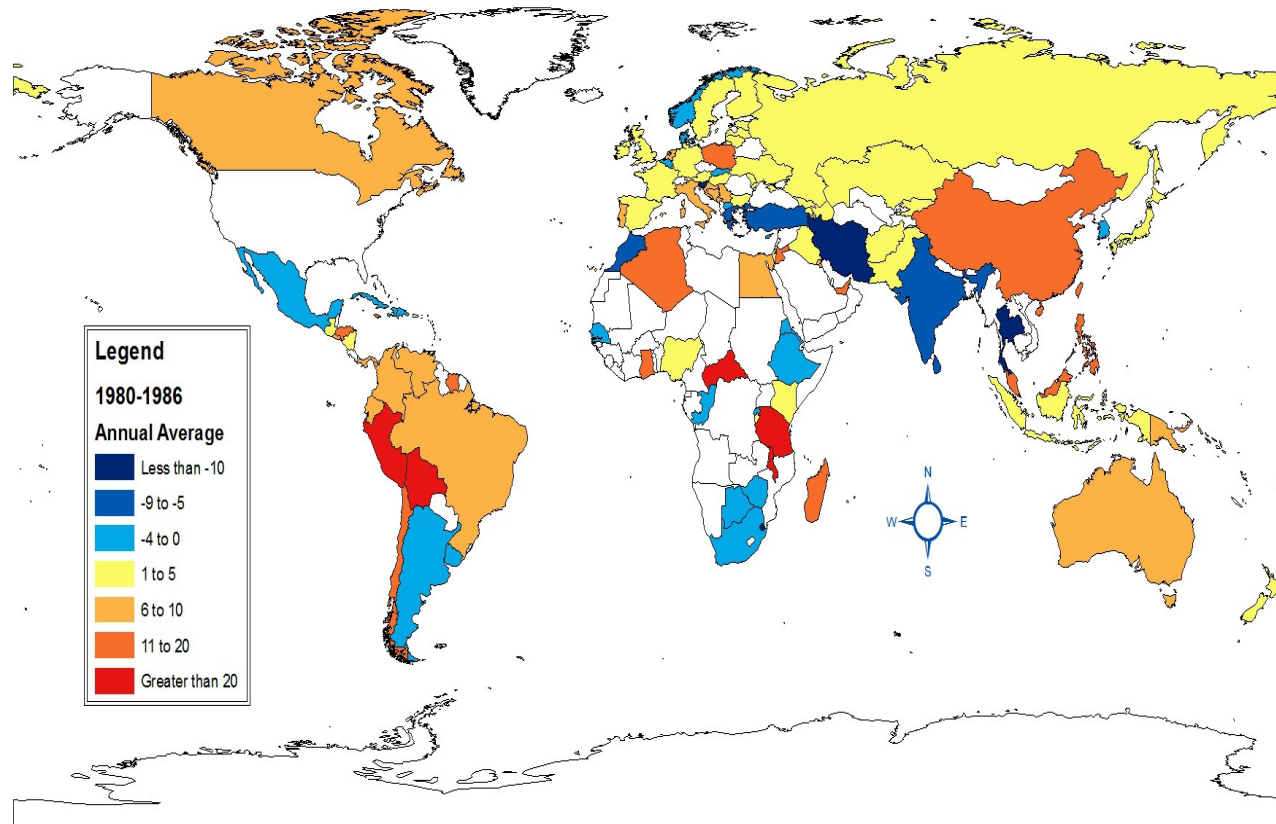
3) For Slovakia, data before 1990 is filled in from Czechoslovakia, since Slovakia only became a country in 1993.

Map by: Aleksandra Malinowska

Data: Amin Shams, Beatrice Halbach, Jaehee Choi, Aleksandra Malinowska

UTIP-UNIDO Theil Coefficients: Annual Rates of Change

1980-1986



1) For the countries of the former USSR, (Azerbaijan, Armenia, Estonia, Georgia, Kazakhstan, Kyrgystan, Latvia, Lithuania, Moldova, and Ukraine) data for the USSR was substituted for the years before the breakup.

2) For the countries of former Yugoslavia, (Bosnia and Herzegovina, Croatia, Slovenia, The former Yugoslavic Republic of Macedonia, Serbia, and Montenegro) data for Yugoslavia was substituted for the years before the breakup.

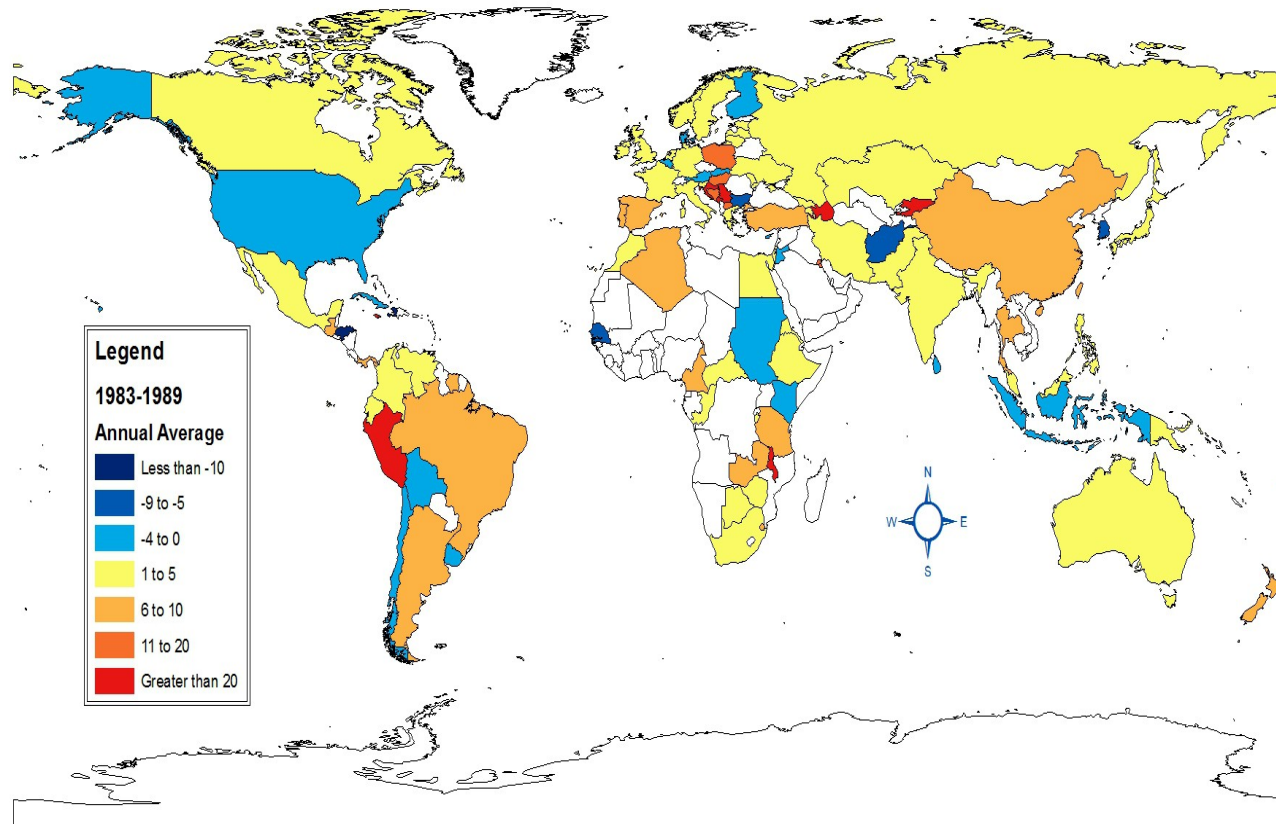
3) For Slovakia, data before 1990 is filled in from Czechoslovakia, since Slovakia only became a country in 1993.

Map by: Aleksandra Malinowska

Data: Amin Shams, Beatrice Halbach, Jaehee Choi, Aleksandra Malinowska

UTIP-UNIDO Theil Coefficients: Annual Rates of Change

1983-1989



1) For the countries of the former USSR, (Azerbaijan, Armenia, Estonia, Georgia, Kazakhstan, Kyrgystan, Latvia, Lithuania, Moldova, and Ukraine) data for the USSR was substituted for the years before the breakup.

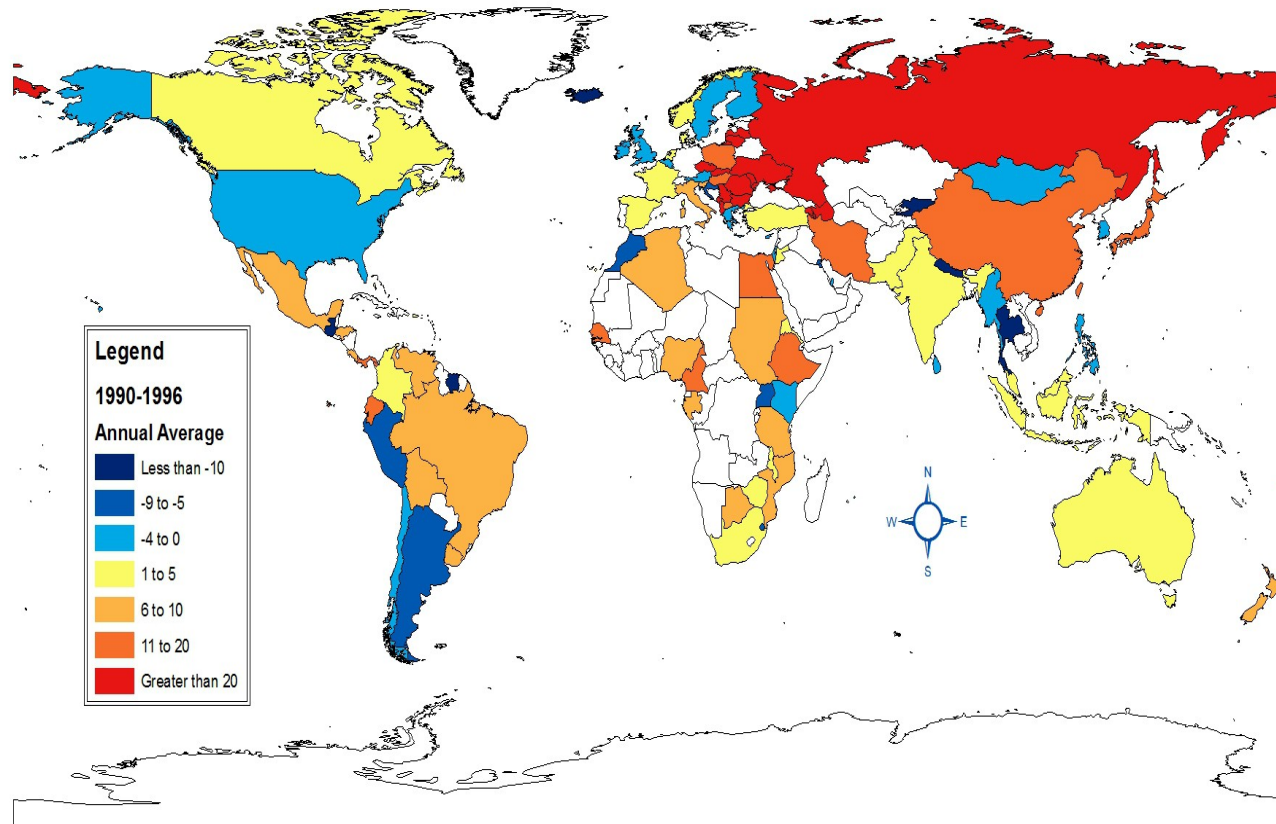
2) For the countries of former Yugoslavia, (Bosnia and Herzegovina, Croatia, Slovenia, The former Yugoslavic Republic of Macedonia, Serbia, and Montenegro) data for Yugoslavia was substituted for the years before the breakup.

3) For Slovakia, data before 1990 is filled in from Czechoslovakia, since Slovakia only became a country in 1993.

Map by: Aleksandra Malinowska
Data: Amin Shams, Beatrice Halbach, Jaehee Choi, Aleksandra Malinowska

UTIP-UNIDO Theil Coefficients: Annual Rates of Change

1990-1996



1) For the countries of the former USSR, (Azerbaijan, Armenia, Estonia, Georgia, Kazakhstan, Kyrgystan, Latvia, Lithuania, Moldova, and Ukraine) data for the USSR was substituted for the years before the breakup.

2) For the countries of former Yugoslavia, (Bosnia and Herzegovina, Croatia, Slovenia, The former Yugoslavic Republic of Macedonia, Serbia, and Montenegro) data for Yugoslavia was substituted for the years before the breakup.

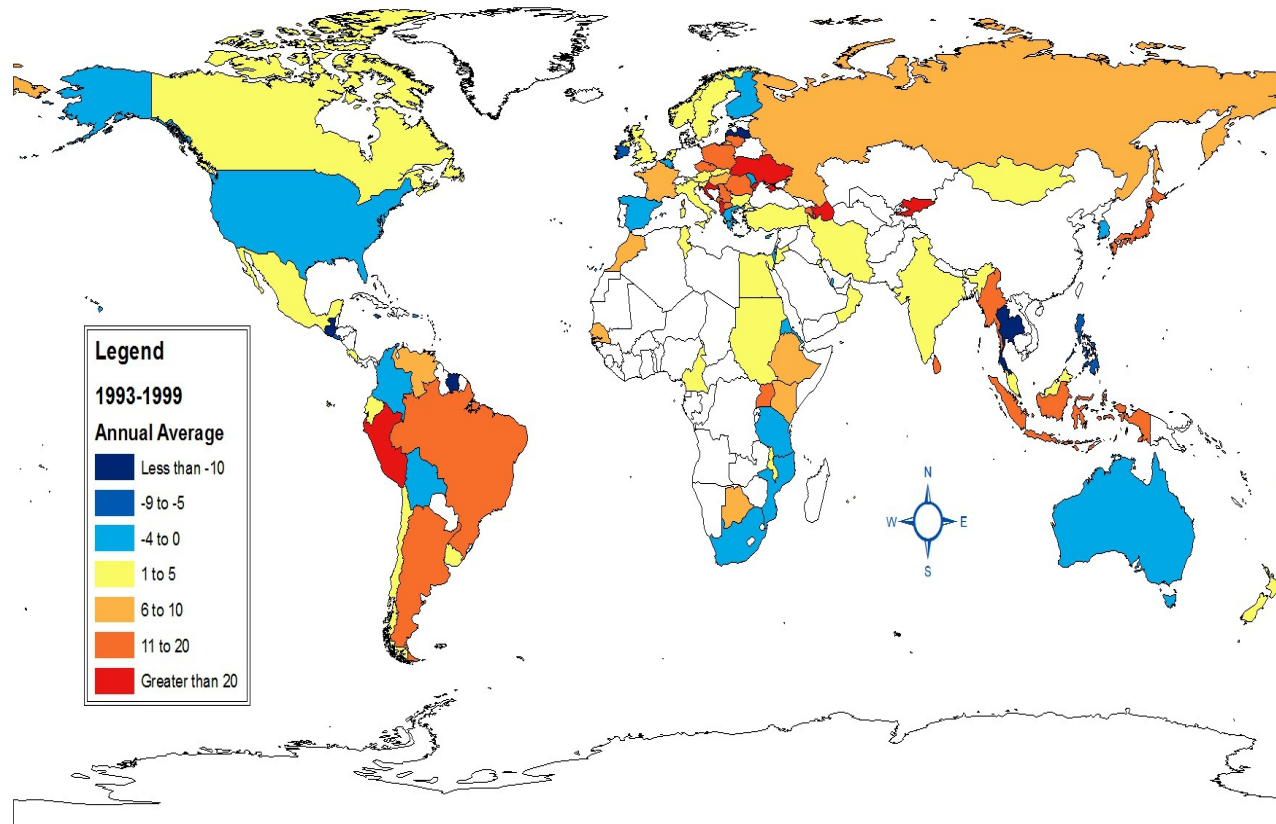
3) For Slovakia, data before 1990 is filled in from Czechoslovakia, since Slovakia only became a country in 1993.

Map by: Aleksandra Malinowska

Data: Amin Shams, Beatrice Halbach, Jaehee Choi, Aleksandra Malinowska

UTIP-UNIDO Theil Coefficients: Annual Rates of Change

1993-1999



1) For the countries of the former USSR, (Azerbaijan, Armenia, Estonia, Georgia, Kazakhstan, Kyrgystan, Latvia, Lithuania, Moldova, and Ukraine) data for the USSR was substituted for the years before the breakup.

2) For the countries of former Yugoslavia, (Bosnia and Herzegovina, Croatia, Slovenia, The former Yugoslavic Republic of Macedonia, Serbia, and Montenegro) data for Yugoslavia was substituted for the years before the breakup.

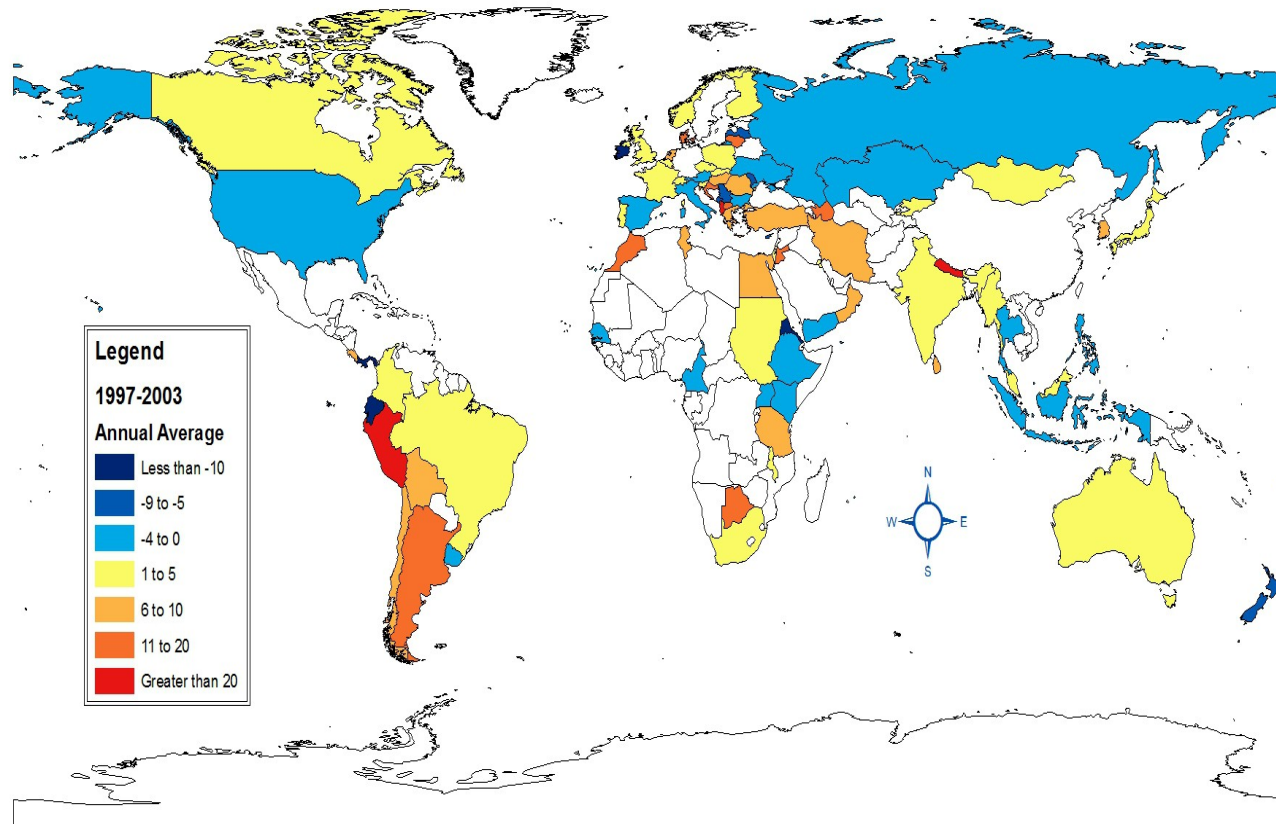
3) For Slovakia, data before 1990 is filled in from Czechoslovakia, since Slovakia only became a country in 1993.

Map by: Aleksandra Malinowska

Data: Amin Shams, Beatrice Halbach, Jaehee Choi, Aleksandra Malinowska

UTIP-UNIDO Theil Coefficients: Annual Rates of Change

1997-2003



1) For the countries of the former USSR, (Azerbaijan, Armenia, Estonia, Georgia, Kazakhstan, Kyrgystan, Latvia, Lithuania, Moldova, and Ukraine) data for the USSR was substituted for the years before the breakup.

2) For the countries of former Yugoslavia, (Bosnia and Herzegovina, Croatia, Slovenia, The former Yugoslavic Republic of Macedonia, Serbia, and Montenegro) data for Yugoslavia was substituted for the years before the breakup.

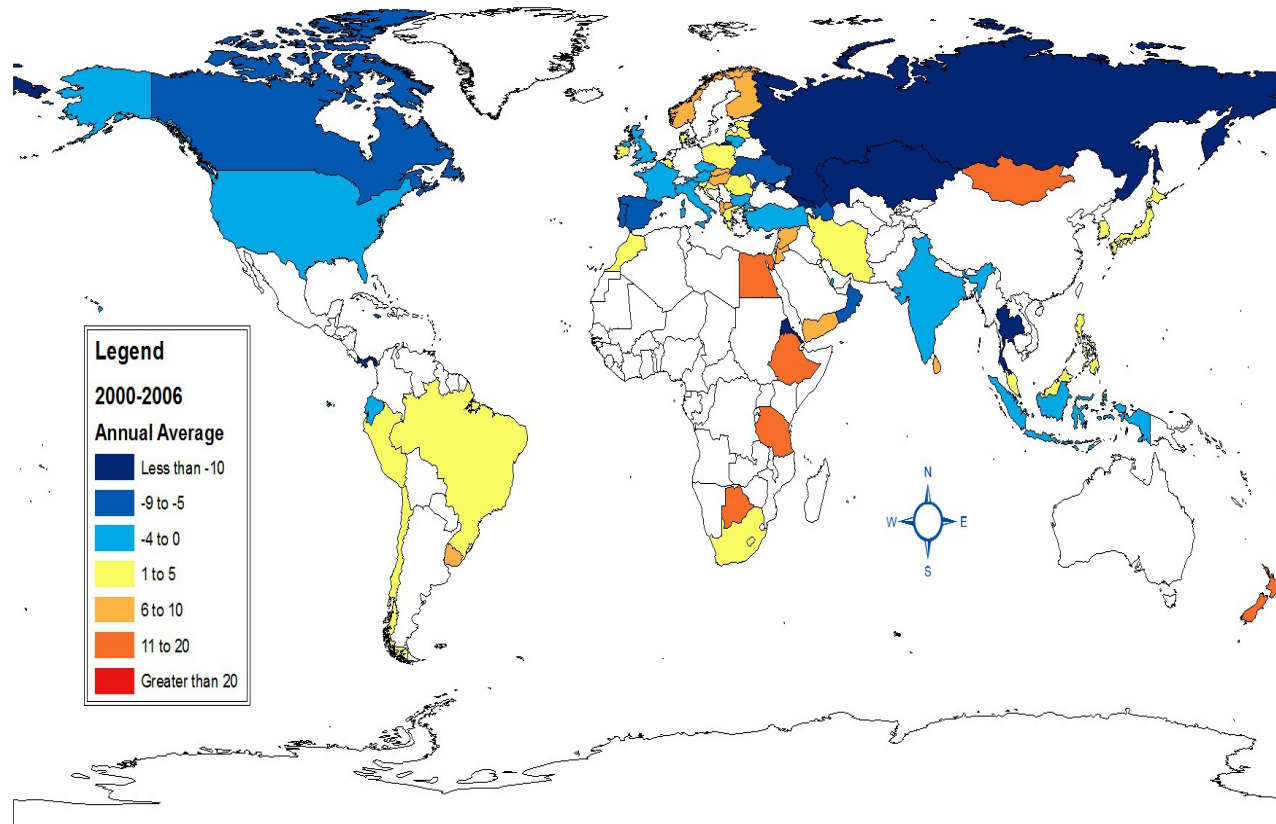
3) For Slovakia, data before 1990 is filled in from Czechoslovakia, since Slovakia only became a country in 1993.

Map by: Aleksandra Malinowska

Data: Amin Shams, Beatrice Halbach, Jaehee Choi, Aleksandra Malinowska

UTIP-UNIDO Theil Coefficients: Annual Rates of Change

2000-2006



1) For the countries of the former USSR, (Azerbaijan, Armenia, Estonia, Georgia, Kazakhstan, Kyrgystan, Latvia, Lithuania, Moldova, and Ukraine) data for the USSR was substituted for the years before the breakup.

2) For the countries of former Yugoslavia, (Bosnia and Herzegovina, Croatia, Slovenia, The former Yugoslavic Republic of Macedonia, Serbia, and Montenegro) data for Yugoslavia was substituted for the years before the breakup.

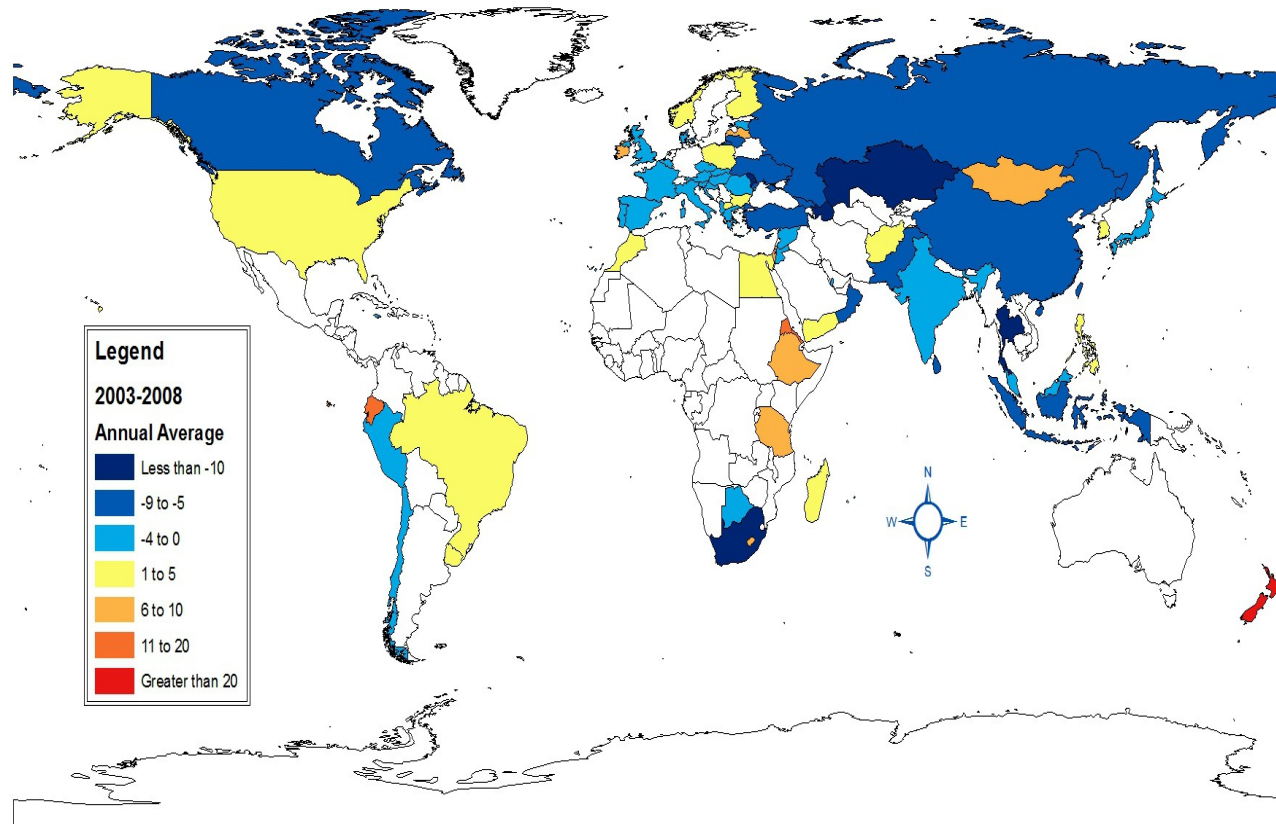
3) For Slovakia, data before 1990 is filled in from Czechoslovakia, since Slovakia only became a country in 1993.

Map by: Aleksandra Malinowska

Data: Amin Shams, Beatrice Halbach, Jaehee Choi, Aleksandra Malinowska

UTIP-UNIDO Theil Coefficients: Annual Rates of Change

2003-2008



1) For the countries of the former USSR, (Azerbaijan, Armenia, Estonia, Georgia, Kazakhstan, Kyrgystan, Latvia, Lithuania, Moldova, and Ukraine) data for the USSR was substituted for the years before the breakup.

2) For the countries of former Yugoslavia, (Bosnia and Herzegovina, Croatia, Slovenia, The former Yugoslavic Republic of Macedonia, Serbia, and Montenegro) data for Yugoslavia was substituted for the years before the breakup.

3) For Slovakia, data before 1990 is filled in from Czechoslovakia, since Slovakia only became a country in 1993.

Map by: Aleksandra Malinowska

Data: Amin Shams, Beatrice Halbach, Jaehee Choi, Aleksandra Malinowska



UNIVERSITY OF TEXAS
INEQUALITY PROJECT

<http://utip.gov.utexas.edu>

Calculations and Charts by

Beatrice Halbach
Aleksandra Malinowska
Amin Shams
Wenjie Zhang
Jaehee Choi

Support from INET gratefully acknowledged.